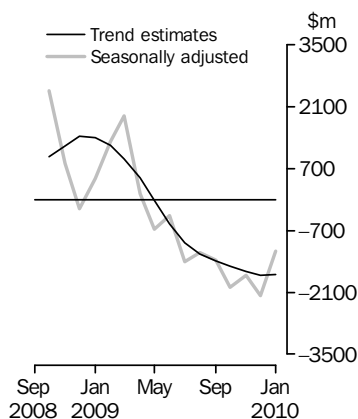


INTERNATIONAL TRADE IN GOODS AND SERVICES

AUSTRALIA

EMBARGO: 11.30AM (CANBERRA TIME) THURS 4 MAR 2010

Balance on Goods and Services



KEY FIGURES

	Nov 2009	Dec 2009	Jan 2010	Dec 09 to Jan 10 %
	\$m	\$m	\$m	change
BALANCE ON GOODS AND SERVICES				
Trend estimates	-1 632	-1 709	-1 708	..
Seasonally adjusted	-1 720	-2 174	-1 176	..
CREDITS (Exports of goods & services)				
Trend estimates	19 636	19 698	19 806	1
Seasonally adjusted	19 107	19 868	20 146	1
DEBITS (Imports of goods & services)				
Trend estimates	21 268	21 407	21 514	—
Seasonally adjusted	20 828	22 042	21 323	-3

.. not applicable

— nil or rounded to zero (including null cells)

KEY POINTS

BALANCE ON GOODS AND SERVICES

- The trend estimate of the *balance on goods and services* was a deficit of \$1,708m in January 2010, a decrease of \$1m on the revised deficit in December 2009.
- In seasonally adjusted terms, the *balance on goods and services* was a deficit of \$1,176m in January 2010, a decrease of \$998m on the revised deficit in December 2009.

CREDITS (EXPORTS OF GOODS & SERVICES)

- Seasonally adjusted, *goods and services credits* rose \$278m (1%) to \$20,146m. *Non-monetary gold* rose \$167m (15%) and *non-rural goods* rose \$130m (1%). *Rural goods* fell \$36m (2%). *Services* credits rose \$13m.

DEBITS (IMPORTS OF GOODS & SERVICES)

- Seasonally adjusted, *goods and services debits* fell \$719m (3%) to \$21,323m. *Intermediate and other merchandise goods* fell \$517m (7%) with the *fuels and lubricants* component down \$666m (25%), *non-monetary gold* fell \$314m (47%) and *capital goods* fell \$31m (1%). *Consumption goods* rose \$122m (2%) and *services* debits rose \$20m.

INQUIRIES

For further information contact Selvi Sekhar on Canberra (02) 6252 5540 for Goods, and Karen McGuigan on Canberra (02) 6252 5415 for Services.

NOTES

FORTHCOMING ISSUES

ISSUE	RELEASE DATE
February 2010	1 April 2010
March 2010	6 May 2010
April 2010	3 June 2010
May 2010	6 July 2010
June 2010	4 August 2010
July 2010	2 September 2010

REVISIONS

Revisions have been made to incorporate the latest available data relating to merchandise trade. There were no revisions to the balance of payments series in original terms.

RELATED PUBLICATION

The publication *Characteristics of Australian Exporters, 2008–09* (cat. no. 5368.0.55.006) will be released on 26 March 2010. This publication will analyse the number and characteristics of Australia's exporters. Estimates of exporters of merchandise trade are compiled from data sourced from the Australian Customs and Border Protection Service and from the Australian Taxation Office's Australian Business Register. Estimates on exporters of services are compiled largely from the ABS Survey of International Trade in Services.

CHANGES IN THIS ISSUE

CHANGES TO STATISTICS PRESENTED ON AN ANZSIC BASIS

From this issue, there will be changes to the availability of merchandise trade industry statistics.

The changes will affect merchandise trade data available by subscription or on an ad hoc basis:

- all data for June 2005 and earlier is available only in accordance with Australian and New Zealand Standard Industrial Classification 1993 (ANZSIC93)
- data from July 2005 to June 2009 is available in accordance with both ANZSIC93 and Australian and New Zealand Standard Industrial Classification 2006 (ANZSIC06)
- data from July 2009 is available only on an ANZSIC06 basis.
- data from July 2009 to December 2009 previously released on an ANZSIC93 basis is no longer available.

For further details about the introduction of ANZSIC06 and information on concordances, refer to the Information paper: *Changes to International Trade in Goods Industry Statistics, July 2009* (cat. no. 5368.0.55.011).

These changes will not change the statistics presented on a Balance of Payments basis nor result in revisions to the total value of goods and services credits and debits.

Brian Pink
Australian Statistician

CONTENTS

page

Time series data	4
----------------------------	---

ANALYSIS

Analysis and comments	5
---------------------------------	---

TABLES

INTERNATIONAL TRADE IN GOODS AND SERVICES – BALANCE OF PAYMENTS BASIS

1 Goods and services, summary, seasonally adjusted and trend estimates	10
2 Goods and services, summary, original	11
3 Goods credits, original	12
4 Goods debits, original	13
5 Goods credits, seasonally adjusted	14
6 Goods debits, seasonally adjusted	15
7 Goods credits, trend estimates	16
8 Goods debits, trend estimates	17
9 Services, summary, original	18
10 Services, summary, seasonally adjusted and trend estimates	19
11 Services, original, quarterly	20

INTERNATIONAL MERCHANDISE TRADE – RECORDED TRADE BASIS

12 International merchandise exports, by commodity	21
13 International merchandise imports, by commodity	24
14 International merchandise trade, by country and country groups	27
15 International merchandise trade, by state	28

OTHER TABLES

16 Period average exchange rates per Australian dollar	29
17 Summary of revisions, goods and services, original	30

OTHER INFORMATION

Explanatory Notes	31
Appendix – Related articles	37

TIME SERIES DATA

TIME SERIES DATA

Data is available free on the ABS web site include longer time series of tables in this publication and the additional spreadsheets and data cubes listed below.

- 31 Merchandise exports by Broad Economic Category (BEC)
- 32 Merchandise exports by industry of origin (ANZSIC)
- 33 Merchandise imports by Broad Economic Category (BEC)
- 34 Merchandise imports by Balance of Payments Broad Economic Category (BoPBEC)
- 35 Merchandise imports by industry of origin (ANZSIC)
- 36 Merchandise exports, state by country and country groups
- 37 Merchandise imports, state by country and country groups
- 91 Monthly seasonal adjustment factors and forward factors for 12 months.

TRADE IN SERVICES DATA CUBES

Trade in Services data cubes are usually updated on an annual basis - with the March issue of this publication for calendar year (cat. no. 5368.0.55.004) and with the September issue for financial year (cat. no. 5368.0.55.003).

The following tables are included in both sets of data cubes:

- 1 International trade in services, credits, state by year
- 2 International trade in services, credits, year by state
- 3 International trade in services, debits, state by year
- 4 International trade in services, debits, year by state
- 5 International trade in services, credits, year by country and service
- 6 International trade in services, credits, service by year and by country
- 7 International trade in services, debits, year by country and service
- 8 International trade in services, debits, service by year and by country
- 10 International trade in services, credits, year by country and travel service
- 11 International trade in services, debits, year by country and travel service
- 12 International trade in services, credits, education related travel, by educational sector, by type of expenditure by year.

ANALYSIS AND COMMENTS

BALANCE ON GOODS AND SERVICES

The trend estimate of the balance on goods and services was a deficit of \$1,708m in January 2010, a decrease of \$1m on the deficit in December 2009.

In seasonally adjusted terms, the balance on goods and services was a deficit of \$1,176m in January 2010, a decrease of \$998m on the deficit in December 2009.

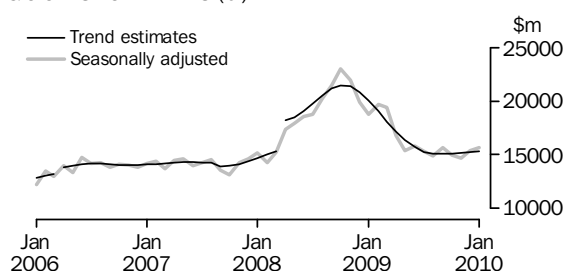
EXPORTS OF GOODS AND SERVICES

Between December 2009 and January 2010 the trend estimate of goods and services credits rose \$108m (1%) to \$19,806m.

In seasonally adjusted terms, goods and services credits rose \$278m (1%) to \$20,146m. Non-monetary gold rose \$167m (15%) and non-rural goods rose \$130m (1%). Rural goods fell \$36m (2%). Services credits rose \$13m.

Exports of goods

GOODS CREDITS (a)



(a) Trend breaks of \$500m to April 2006 and \$2,725m to April 2008 have been applied.

RURAL GOODS

In trend terms, exports of rural goods rose \$26m (1%) to \$2,026m.

In seasonally adjusted terms, exports of rural goods fell \$36m (2%) to \$2,081m.

The main component contributing to the fall in seasonally adjusted estimates was other rural, down \$87m (9%).

Partly offsetting this decrease was the cereal grains and cereal preparations component, up \$54m (13%).

NON-RURAL GOODS

In trend terms, exports of non-rural goods rose \$50m to \$12,059m.

In seasonally adjusted terms, exports of non-rural goods rose \$130m (1%) to \$12,305m.

The main component contributing to the rise in seasonally adjusted estimates was metal ores and minerals, up \$239m (7%).

Partly offsetting this increase was the coal, coke & briquettes component, down \$94m (3%).

NET EXPORTS OF GOODS UNDER MERCHANTING

In trend terms, net exports of goods under merchanting fell \$2m (7%) to \$27m.

In seasonally adjusted terms, net exports of goods under merchanting rose \$4m (15%) to \$31m.

ANALYSIS AND COMMENTS *continued*

Exports of goods continued

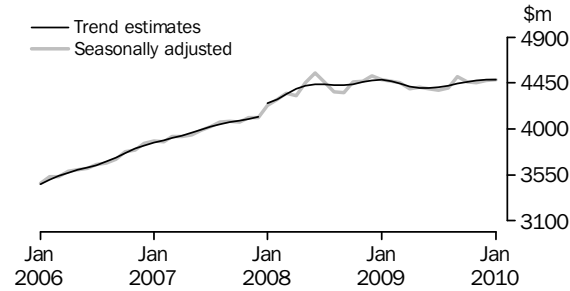
NON-MONETARY GOLD

In trend terms, exports of non-monetary gold rose \$29m (2%) to \$1,210m.

In seasonally adjusted terms, non-monetary gold rose \$167m (15%) to \$1,246m.

Exports of services

SERVICES CREDITS (a)



(a) A trend break of \$106m has been applied to January 2008.

In trend terms, services credits rose \$6m to \$4,485m.

In seasonally adjusted terms, services credits rose \$13m to \$4,483m.

The main component contributing to the rise in the seasonally adjusted estimates was other services, up \$43m (4%).

This rise was partly offset by the travel services component, down \$31m (1%).

In seasonally adjusted terms, tourism related services credits fell \$29m (1%) to \$2,956m.

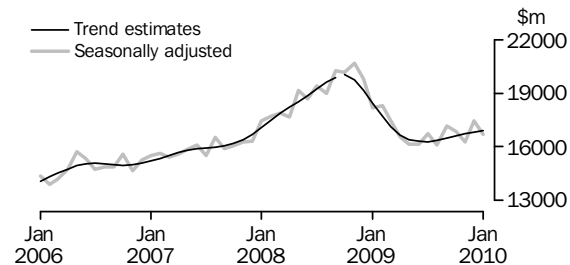
IMPORTS OF GOODS AND SERVICES

Between December 2009 and January 2010 the trend estimate of goods and services debits rose \$107m to \$21,514m.

In seasonally adjusted terms, goods and services debits fell \$719m (3%) to \$21,323m. Intermediate and other merchandise goods fell \$517m (7%), non-monetary gold fell \$314m (47%) and capital goods fell \$31m (1%). Consumption goods rose \$122m (2%) and services debits rose \$20m.

Imports of goods

GOODS DEBITS (a)



(a) A trend break of \$167m has been applied to Capital goods n.e.s. debits and related aggregates in October 2008.

ANALYSIS AND COMMENTS *continued*

Imports of goods continued

CONSUMPTION GOODS

In trend terms, imports of consumption goods rose \$2m to \$5,026m.

In seasonally adjusted terms, imports of consumption goods rose \$122m (2%) to \$5,090m.

The main component contributing to the rise in the seasonally adjusted estimates was textiles, clothing and footwear, up \$151m (30%).

CAPITAL GOODS

In trend terms, imports of capital goods rose \$42m (1%) to \$3,915m.

In seasonally adjusted terms, imports of capital goods fell \$31m (1%) to \$3,959m.

The main component contributing to the fall in the seasonally adjusted estimates was machinery and industrial equipment, down \$70m (6%).

This fall was partly offset by the capital goods n.e.s. component, up \$44m (4%).

INTERMEDIATE AND OTHER MERCHANDISE GOODS

In trend terms, imports of intermediate and other merchandise goods rose \$59m (1%) to \$7,427m.

In seasonally adjusted terms, imports of intermediate and other merchandise goods fell \$517m (7%) to \$7,306m.

The main component contributing to the fall in the seasonally adjusted estimates was fuels and lubricants, down \$666m (25%). In original terms, on a merchandise trade basis crude petroleum decreased \$325m (22%) with volumes down 22%. Refined petroleum decreased \$282m (29%) with prices up 7% and volumes down 33%.

The main components partly offsetting this seasonally adjusted fall were:

- other merchandise goods, up \$116m
- processed industrial supplies, up \$84m (5%)
- parts for transport equipment, up \$60m (9%).

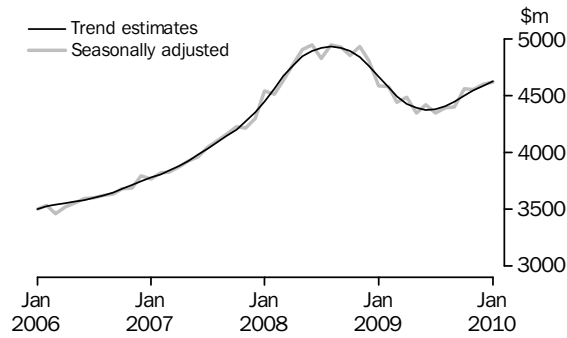
NON-MONETARY GOLD

In trend terms, imports of non-monetary gold fell \$33m (6%) to \$524m.

In seasonally adjusted terms, non-monetary gold debits fell \$314m (47%) to \$351m.

Imports of services

SERVICES DEBITS



In trend terms, services debits rose \$37m (1%) to \$4,622m.

In seasonally adjusted terms, services debits rose \$20m to \$4,616m.

The main component contributing to the rise in the seasonally adjusted estimates was other services, up \$51m (4%).

This rise was partly offset by the transport services component, down \$33m (3%).

In seasonally adjusted terms, tourism related services debits fell \$18m (1%) to \$2,491m.

GOODS AND SERVICES (a), Summary—Seasonally Adjusted and Trend Estimates

	Feb 2009	Mar 2009	Apr 2009	May 2009	Jun 2009	Jul 2009	Aug 2009	Sep 2009	Oct 2009	Nov 2009	Dec 2009	Jan 2010
	\$m	\$m	\$m	\$m	\$m	\$m	\$m	\$m	\$m	\$m	\$m	\$m
SEASONALLY ADJUSTED												
BALANCE												
On goods and services	1 302	1 899	129	-668	-367	-1 410	-1 199	-1 379	-1 985	-1 720	-2 174	-1 176
CREDITS												
Total goods and services	24 175	23 821	21 183	19 814	20 215	19 663	19 298	20 179	19 457	19 107	19 868	20 146
Total goods	19 706	19 372	16 788	15 406	15 822	15 287	14 895	15 667	14 993	14 652	15 398	15 663
Rural goods(b)	2 539	2 746	2 438	2 297	2 333	2 182	2 095	2 005	1 852	1 961	2 117	2 081
Non-rural goods(b)	14 917	14 479	13 000	12 106	12 323	12 230	11 924	12 245	11 959	11 539	12 175	12 305
Net exports of goods under merchandise(c)	38	38	25	25	25	41	41	40	27	27	27	31
Non-monetary gold(c)	2 212	2 109	1 325	978	1 141	835	836	1 377	1 155	1 125	1 079	1 246
Total services	4 469	4 449	4 395	4 408	4 393	4 376	4 402	4 512	4 464	4 456	4 470	4 483
DEBITS												
Total goods and services	-22 873	-21 922	-21 054	-20 482	-20 582	-21 073	-20 496	-21 557	-21 442	-20 828	-22 042	-21 323
Total goods	-18 295	-17 480	-16 567	-16 139	-16 160	-16 730	-16 105	-17 155	-16 884	-16 275	-17 446	-16 706
Consumption goods	-4 445	-5 139	-5 054	-5 023	-5 170	-5 233	-4 935	-5 088	-5 029	-5 050	-4 968	-5 090
Capital goods	-4 936	-4 241	-3 783	-3 535	-3 674	-3 835	-3 926	-3 999	-4 055	-3 752	-3 990	-3 959
Intermediate and other merchandise goods	-7 223	-7 038	-7 146	-6 697	-6 970	-7 407	-6 689	-7 331	-7 128	-7 032	-7 823	-7 306
Non-monetary gold(c)	-1 691	-1 063	-584	-884	-346	-255	-555	-737	-672	-441	-665	-351
Total services	-4 578	-4 442	-4 487	-4 343	-4 422	-4 343	-4 392	-4 402	-4 558	-4 552	-4 596	-4 616
TREND ESTIMATES (d)												
BALANCE												
On goods and services	1 225	922	490	-23	-547	-976	-1 240	-1 383	-1 516	-1 632	-1 709	-1 708
CREDITS												
Total goods and services	23 518	22 514	21 583	20 782	20 124	19 677	19 516	19 549	19 594	19 636	19 698	19 806
Total goods	19 049	18 071	17 166	16 382	15 727	15 270	15 090	15 104	15 133	15 165	15 219	15 322
Rural goods(b)	2 564	2 531	2 475	2 395	2 286	2 170	2 076	2 022	1 995	1 990	2 000	2 026
Non-rural goods(b)	14 720	13 844	13 165	12 676	12 317	12 076	11 981	11 980	11 981	11 985	12 009	12 059
Net exports of goods under merchandise	24	30	33	33	33	34	35	35	33	31	29	27
Non-monetary gold	1 740	1 665	1 493	1 278	1 091	990	998	1 068	1 124	1 159	1 181	1 210
Total services	4 469	4 444	4 417	4 400	4 397	4 408	4 425	4 445	4 460	4 471	4 479	4 485
DEBITS												
Total goods and services	-22 293	-21 592	-21 093	-20 805	-20 672	-20 653	-20 755	-20 932	-21 110	-21 268	-21 407	-21 514
Total goods	-17 722	-17 101	-16 664	-16 415	-16 297	-16 274	-16 350	-16 484	-16 612	-16 723	-16 822	-16 892
Consumption goods	-5 028	-4 991	-5 001	-5 046	-5 094	-5 112	-5 090	-5 059	-5 041	-5 030	-5 024	-5 026
Capital goods	-4 127	-3 990	-3 865	-3 766	-3 703	-3 678	-3 696	-3 740	-3 784	-3 828	-3 873	-3 915
Intermediate and other merchandise goods	-7 397	-7 082	-6 945	-6 929	-6 958	-7 002	-7 059	-7 132	-7 212	-7 293	-7 368	-7 427
Non-monetary gold	-1 170	-1 038	-854	-673	-542	-482	-505	-552	-574	-573	-557	-524
Total services	-4 572	-4 491	-4 429	-4 390	-4 374	-4 379	-4 405	-4 449	-4 498	-4 545	-4 585	-4 622

(a) For sign conventions, see paragraph 15 of the Explanatory Notes.

(b) For all time periods, estimates for sugar, sugar preparations and honey are included in Non-rural goods.

(c) These components are not seasonally adjusted.

(d) Caution should be used when interpreting recent trend estimates as they may be affected by unusual economic factors. For more details on trend estimates, please see paragraph 19 of the explanatory notes.

GOODS AND SERVICES (a), Summary—Original

	Feb 2009	Mar 2009	Apr 2009	May 2009	Jun 2009	Jul 2009	Aug 2009	Sep 2009	Oct 2009	Nov 2009	Dec 2009	Jan 2010
	\$m	\$m	\$m	\$m	\$m	\$m	\$m	\$m	\$m	\$m	\$m	\$m
BALANCE												
On goods and services	2 191	2 768	266	560	-631	-1 841	-347	-2 477	-2 608	-2 731	-2 128	-1 774
CREDITS												
Total goods and services	23 077	24 532	20 737	19 976	19 629	19 728	19 716	20 271	20 440	19 026	20 768	18 832
Total goods	18 524	19 920	16 244	15 684	15 586	15 325	15 212	15 939	15 766	14 527	16 345	14 450
Rural goods(b)	2 533	2 986	2 492	2 487	2 223	2 110	2 068	1 963	1 886	1 902	2 228	1 877
Non-rural goods(b)	13 741	14 787	12 402	12 194	12 197	12 339	12 267	12 559	12 698	11 473	13 011	11 296
Net exports of goods under merchanting	38	38	25	25	25	41	41	40	27	27	27	31
Non-monetary gold	2 212	2 109	1 325	978	1 141	835	836	1 377	1 155	1 125	1 079	1 246
Total services	4 553	4 612	4 493	4 292	4 043	4 403	4 504	4 332	4 674	4 499	4 423	4 382
DEBITS												
Total goods and services	-20 886	-21 764	-20 471	-19 416	-20 260	-21 569	-20 063	-22 748	-23 048	-21 757	-22 896	-20 606
Total goods	-16 900	-17 554	-16 075	-15 298	-15 824	-16 990	-15 757	-18 030	-18 189	-17 350	-17 997	-15 688
Consumption goods	-4 039	-4 944	-4 730	-4 542	-4 927	-5 409	-4 918	-5 569	-5 785	-5 602	-5 076	-4 598
Capital goods	-4 353	-4 370	-3 617	-3 449	-3 759	-3 853	-3 738	-4 183	-4 261	-4 178	-4 266	-3 607
Intermediate and other merchandise goods	-6 817	-7 177	-7 144	-6 423	-6 792	-7 473	-6 546	-7 541	-7 471	-7 129	-7 990	-7 132
Non-monetary gold	-1 691	-1 063	-584	-884	-346	-255	-555	-737	-672	-441	-665	-351
Total services	-3 986	-4 210	-4 396	-4 118	-4 436	-4 579	-4 306	-4 718	-4 859	-4 407	-4 899	-4 918

(a) For sign conventions, see paragraph 15 of the Explanatory Notes.

(b) For all time periods, estimates for sugar, sugar preparations and honey are included in Non-rural goods.

							7 MONTHS		Change
							ENDED JANUARY		
	2006-07	2007-08	2008-09	Nov 2009	Dec 2009	Jan 2010	2009	2010	
	\$m	\$m	\$m	\$m	\$m	\$m	\$m	%	
Total goods credits	169 524	182 952	231 471	14 527	16 345	14 450	145 513	107 564	-26.1
General merchandise	158 570	170 471	213 662	13 375	15 239	13 173	135 620	99 677	-26.5
<i>Rural goods</i>	25 090	25 494	29 383	1 902	2 228	1 877	16 662	14 034	-15.8
Meat and meat preparations	7 080	6 542	7 454	527	554	332	4 419	3 549	-19.7
Cereal grains and cereal preparations	4 171	4 975	6 881	298	388	492	3 381	2 854	-15.6
Wool and sheepskins	3 065	2 796	2 322	230	205	139	1 367	1 173	-14.2
Other rural (a)	10 774	11 181	12 726	847	1 081	914	7 495	6 458	-13.8
<i>Non-rural goods</i>	133 480	144 977	184 279	11 473	13 011	11 296	118 958	85 643	-28.0
Metal ores and minerals	35 315	41 339	51 922	3 624	4 054	3 618	32 301	25 956	-19.6
Coal, coke and briquettes	21 928	24 599	54 957	2 467	2 810	2 714	37 021	19 596	-47.1
Other mineral fuels	15 641	18 889	20 707	1 315	1 619	1 469	14 218	10 322	-27.4
Metals (excl. non-monetary gold)	14 821	14 039	12 394	734	932	806	8 116	5 916	-27.1
Machinery	8 391	8 750	8 900	639	703	479	5 399	4 582	-15.1
Transport equipment	4 651	5 723	5 090	361	378	190	3 675	2 332	-36.5
Other manufactures	16 241	16 965	17 601	1 390	1 354	1 038	10 558	9 522	-9.8
Other non-rural (incl. sugar and beverages)	15 113	13 126	11 077	827	1 042	860	6 583	6 629	0.7
Goods procured in ports by carriers	1 379	1 547	1 631	116	119	122	1 087	788	-27.5
Net exports of goods under merchanting	214	209	301	27	27	31	150	234	56.0
Goods acquired under merchanting									
(negative exports)	-1 303	-1 528	-2 387	-139	-138	-115	-1 572	-904	42.5
Goods sold under merchanting	1 517	1 737	2 688	166	165	146	1 722	1 138	-33.9
Non-monetary gold	10 740	12 272	17 508	1 125	1 079	1 246	9 743	7 653	-21.5

(a) For all time periods, estimates for sugar, sugar preparations and honey are included in Other non-rural.

GOODS DEBITS(a), Original

							7 MONTHS ENDED JANUARY		Change
	2006-07	2007-08	2008-09	Nov 2009	Dec 2009	Jan 2010	2009	2010	
	\$m	\$m	\$m	\$m	\$m	\$m	\$m	\$m	
Total goods debits	-183 572	-204 846	-222 437	-17 350	-17 997	-15 688	-140 786	-120 001	14.8
General merchandise	-178 261	-197 253	-210 915	-16 909	-17 332	-15 337	-133 832	-116 325	13.1
Consumption goods	-54 913	-59 371	-61 419	-5 602	-5 076	-4 598	-38 237	-36 957	3.3
Food and beverages, mainly for consumption	-7 182	-7 840	-8 857	-778	-824	-671	-5 477	-5 405	1.3
Household electrical items	-4 525	-5 051	-5 488	-622	-475	-335	-3 384	-3 544	-4.7
Non-industrial transport equipment	-14 894	-16 872	-13 247	-1 429	-1 422	-1 163	-8 842	-8 870	-0.3
Textiles, clothing and footwear	-6 805	-7 051	-8 287	-579	-442	-746	-5 081	-4 427	12.9
Toys, books and leisure goods	-4 328	-4 561	-5 277	-458	-326	-261	-3 313	-2 954	10.8
Consumption goods n.e.s.	-17 179	-17 996	-20 263	-1 736	-1 587	-1 422	-12 140	-11 757	3.2
Capital goods	-41 774	-45 299	-51 457	-4 178	-4 266	-3 607	-31 909	-28 086	12.0
Machinery and industrial equipment	-15 330	-16 480	-18 488	-1 516	-1 320	-1 104	-11 596	-9 146	21.1
ADP equipment	-7 008	-7 074	-7 257	-561	-652	-561	-4 379	-4 162	5.0
Telecommunications equipment	-5 315	-5 790	-6 431	-638	-519	-370	-3 770	-3 598	4.6
Civil aircraft(b)	-1 667	-2 691	na	na	na	na	na	na	na
Industrial transport equipment n.e.s.	-6 463	-7 502	-6 527	-590	-562	-476	-4 747	-3 557	25.1
Capital goods n.e.s.(b)	-5 991	-5 762	-11 230	-873	-1 213	-1 096	-5 893	-7 623	-29.4
Intermediate and other merchandise goods	-81 574	-92 583	-98 039	-7 129	-7 990	-7 132	-63 686	-51 282	19.5
Food and beverages, mainly for industry	-819	-923	-1 186	-81	-91	-68	-746	-606	18.8
Primary industrial supplies n.e.s.	-1 552	-1 477	-1 901	-114	-175	-88	-1 394	-783	43.8
Fuels and lubricants	-21 470	-29 772	-28 213	-2 089	-2 624	-1 958	-19 058	-15 138	20.6
Parts for transport equipment	-8 355	-8 837	-8 599	-640	-672	-685	-5 576	-4 751	14.8
Parts for ADP equipment	-1 620	-1 115	-1 067	-70	-87	-87	-640	-546	14.7
Other parts for capital goods	-11 780	-11 990	-14 312	-1 108	-1 307	-1 117	-8 434	-8 244	2.3
Organic and inorganic chemicals	-4 406	-4 673	-5 384	-343	-381	-378	-3 449	-2 506	27.3
Paper and paperboard	-2 368	-2 359	-2 403	-193	-183	-189	-1 577	-1 355	14.1
Textile yarn and fabrics	-1 366	-1 334	-1 344	-105	-86	-92	-850	-714	16.0
Iron and steel	-3 817	-3 721	-5 528	-244	-246	-244	-3 940	-1 776	54.9
Plastics	-2 957	-3 064	-3 028	-230	-223	-210	-1 973	-1 577	20.1
Processed industrial supplies n.e.s.	-17 997	-20 132	-21 919	-1 654	-1 650	-1 683	-13 944	-11 506	17.5
Other merchandise goods(b)	-1 619	-1 415	-1 516	-69	-79	-195	-973	-733	24.7
Goods procured in ports by carriers	-1 448	-1 771	-1 639	-189	-186	-138	-1 132	-1 047	7.5
Non-monetary gold	-5 311	-7 593	-11 522	-441	-665	-351	-6 954	-3 676	47.1

na not available

(a) For sign conventions, see paragraph 15 of the Explanatory Notes.

(b) From December 2008, the Civil aircraft series and commodities subject to a 'no commodity details' or 'no value details' restriction are included in Capital goods n.e.s.. From September to November 2008 commodities with these restriction are included in Civil aircraft and for earlier periods are included in Other merchandise goods.

GOODS CREDITS, Seasonally Adjusted

	Apr 2009	May 2009	Jun 2009	Jul 2009	Aug 2009	Sep 2009	Oct 2009	Nov 2009	Dec 2009	Jan 2010
	\$m	\$m	\$m	\$m	\$m	\$m	\$m	\$m	\$m	\$m
Total goods credits	16 788	15 406	15 822	15 287	14 895	15 667	14 993	14 652	15 398	15 663
General merchandise	15 438	14 403	14 656	14 411	14 018	14 250	13 811	13 500	14 292	14 386
<i>Rural goods</i>	2 438	2 297	2 333	2 182	2 095	2 005	1 852	1 961	2 117	2 081
Meat and meat preparations	584	584	558	553	548	503	499	477	504	500
Cereal grains and cereal preparations	607	542	647	501	488	426	382	411	403	457
Wool and sheepskins	174	168	163	158	160	163	180	202	188	189
Other rural (a)	1 073	1 003	965	970	899	913	791	871	1 022	935
<i>Non-rural goods</i>	13 000	12 106	12 323	12 230	11 924	12 245	11 959	11 539	12 175	12 305
Metal ores and minerals	3 907	3 677	3 628	3 651	3 642	3 707	3 473	3 677	3 638	3 877
Coal, coke and briquettes(b)	3 630	3 031	3 136	3 025	2 767	3 028	2 673	2 503	2 759	2 665
Other mineral fuels(c)	1 324	1 284	1 358	1 355	1 324	1 252	1 462	1 346	1 521	1 476
Metals (excl. non-monetary gold)(c)	852	839	862	819	854	840	908	720	912	879
Machinery	677	659	689	669	639	669	650	641	641	644
Transport equipment	276	208	271	301	351	324	324	337	310	335
Other manufactures	1 380	1 392	1 399	1 390	1 370	1 341	1 350	1 328	1 337	1 332
Other non-rural (incl. sugar and beverages)	846	915	880	911	875	975	1 014	877	941	980
Goods procured in ports by carriers(c)	108	100	99	108	101	110	105	110	117	119
Net exports of goods under merchanting(d)	25	25	25	41	41	40	27	27	27	31
Non-monetary gold(d)	1 325	978	1 141	835	836	1 377	1 155	1 125	1 079	1 246

(a) For all time periods, estimates for sugar, sugar preparations and honey are included in Other non-rural.

(b) Only a length-of-month adjustment has been applied to this component.

(c) In using these seasonally adjusted series, care should be exercised because of the difficulties associated with reliably estimating the seasonal pattern.

(d) This component is not seasonally adjusted.

GOODS DEBITS(a), Seasonally Adjusted

	Apr 2009	May 2009	Jun 2009	Jul 2009	Aug 2009	Sep 2009	Oct 2009	Nov 2009	Dec 2009	Jan 2010
	\$m	\$m	\$m	\$m	\$m	\$m	\$m	\$m	\$m	\$m
Total goods debits	-16 567	-16 139	-16 160	-16 730	-16 105	-17 155	-16 884	-16 275	-17 446	-16 706
General merchandise	-15 983	-15 255	-15 814	-16 475	-15 550	-16 418	-16 212	-15 834	-16 781	-16 355
Consumption goods	-5 054	-5 023	-5 170	-5 233	-4 935	-5 088	-5 029	-5 050	-4 968	-5 090
Food and beverages, mainly for consumption	-729	-732	-755	-782	-760	-738	-732	-689	-722	-713
Household electrical items	-491	-526	-534	-514	-504	-475	-422	-470	-470	-437
Non-industrial transport equipment	-908	-902	-1 086	-1 117	-1 040	-1 234	-1 270	-1 323	-1 314	-1 319
Textiles, clothing and footwear	-718	-671	-658	-670	-624	-618	-591	-573	-498	-649
Toys, books and leisure goods	-461	-459	-437	-431	-420	-392	-397	-384	-360	-354
Consumption goods n.e.s.	-1 746	-1 733	-1 701	-1 719	-1 587	-1 632	-1 617	-1 611	-1 604	-1 618
Capital goods	-3 783	-3 535	-3 674	-3 835	-3 926	-3 999	-4 055	-3 752	-3 990	-3 959
Machinery and industrial equipment	-1 440	-1 241	-1 355	-1 336	-1 270	-1 294	-1 200	-1 356	-1 208	-1 138
ADP equipment	-589	-508	-570	-664	-606	-554	-594	-564	-589	-626
Telecommunications equipment	-527	-524	-511	-513	-506	-526	-494	-493	-504	-495
Civil aircraft(b)(c)	na	na	na	na	na	na	na	na	na	na
Industrial transport equipment n.e.s.	-333	-297	-355	-429	-413	-519	-493	-534	-541	-509
Capital goods n.e.s.(b)	-894	-966	-883	-892	-1 131	-1 106	-1 274	-806	-1 147	-1 191
Intermediate and other merchandise goods	-7 146	-6 697	-6 970	-7 407	-6 689	-7 331	-7 128	-7 032	-7 823	-7 306
Food and beverages, mainly for industry	-96	-89	-89	-95	-95	-78	-80	-80	-86	-66
Primary industrial supplies n.e.s.(d)	-99	-101	-125	-84	-119	-105	-81	-109	-122	-96
Fuels and lubricants(c)	-1 792	-1 761	-2 021	-2 419	-1 796	-2 249	-2 003	-2 089	-2 624	-1 958
Parts for transport equipment	-643	-593	-602	-584	-622	-769	-690	-613	-675	-735
Parts for ADP equipment	-86	-75	-79	-95	-74	-60	-78	-76	-80	-92
Other parts for capital goods	-1 234	-1 184	-1 178	-1 160	-1 133	-1 157	-1 177	-1 094	-1 225	-1 219
Organic and inorganic chemicals	-401	-361	-396	-363	-354	-333	-365	-386	-369	-353
Paper and paperboard	-176	-168	-168	-171	-175	-186	-184	-186	-194	-197
Textile yarn and fabrics	-107	-99	-94	-101	-108	-102	-100	-94	-92	-96
Iron and steel	-350	-281	-272	-285	-268	-251	-203	-224	-248	-237
Plastics	-225	-201	-212	-233	-214	-211	-219	-212	-216	-215
Processed industrial supplies n.e.s.	-1 616	-1 597	-1 561	-1 629	-1 555	-1 600	-1 620	-1 609	-1 626	-1 710
Other merchandise goods(b)(e)	-220	-87	-73	-75	-62	-114	-139	-69	-79	-195
Goods procured in ports by carriers(c)	-100	-100	-100	-114	-114	-117	-189	-189	-186	-138
Non-monetary gold(c)	-584	-884	-346	-255	-555	-737	-672	-441	-665	-351

na not available

(a) For sign conventions, see paragraph 15 of the Explanatory Notes.

(b) From December 2008, the Civil aircraft series and commodities subject to a 'no commodity details' or 'no value details' restriction are included in Capital goods n.e.s.. From September to November 2008 commodities with these restrictions are included in Civil aircraft and for earlier periods are included in Other merchandise goods.

(c) These components are not seasonally adjusted.

(d) In using these seasonally adjusted series, care should be exercised because of the difficulties associated with reliably estimating the seasonal pattern.

(e) From July 1981, this component is not seasonally adjusted.

GOODS CREDITS(a), Trend Estimates

	Apr 2009	May 2009	Jun 2009	Jul 2009	Aug 2009	Sep 2009	Oct 2009	Nov 2009	Dec 2009	Jan 2010
	\$m	\$m	\$m	\$m	\$m	\$m	\$m	\$m	\$m	\$m
Total goods credits	17 166	16 382	15 727	15 270	15 090	15 104	15 133	15 165	15 219	15 322
General merchandise	15 640	15 071	14 603	14 246	14 057	14 002	13 976	13 975	14 009	14 085
<i>Rural goods</i>	2 475	2 395	2 286	2 170	2 076	2 022	1 995	1 990	2 000	2 026
Meat and meat preparations	597	584	567	547	530	516	505	496	491	488
Cereal grains and cereal preparations	641	614	572	523	477	444	422	410	404	412
Wool and sheepskins	173	168	163	161	164	171	178	185	191	195
Other rural (b)	1 064	1 029	984	938	905	890	890	900	914	931
<i>Non-rural goods</i>	13 165	12 676	12 317	12 076	11 981	11 980	11 981	11 985	12 009	12 059
Metal ores and minerals	3 957	3 837	3 714	3 626	3 599	3 611	3 631	3 657	3 691	3 728
Coal, coke and briquettes	3 558	3 297	3 107	2 961	2 863	2 803	2 747	2 692	2 648	2 625
Other mineral fuels	1 392	1 337	1 312	1 307	1 323	1 351	1 381	1 413	1 445	1 476
Metals (excl. non-monetary gold)	834	838	843	843	842	842	843	847	853	861
Machinery	698	684	673	663	657	654	650	646	642	641
Transport equipment	287	273	275	290	309	324	330	330	329	327
Other manufactures	1 423	1 406	1 390	1 376	1 365	1 356	1 346	1 338	1 331	1 328
Other non-rural (incl. sugar and beverages)	906	899	900	908	919	934	943	950	955	958
Goods procured in ports by carriers	110	106	103	102	103	106	109	112	114	116
Net exports of goods under merchanting	33	33	33	34	35	35	33	31	29	27
Non-monetary gold	1 493	1 278	1 091	990	998	1 068	1 124	1 159	1 181	1 210

(a) Caution should be used when interpreting recent trend estimates as they may be affected by unusual economic factors. For more details on trend estimates, please see paragraph 19 of the explanatory notes.

(b) For all time periods, estimates for sugar, sugar preparations and honey are included in Other non-rural.

	Apr 2009	May 2009	Jun 2009	Jul 2009	Aug 2009	Sep 2009	Oct 2009	Nov 2009	Dec 2009	Jan 2010
	\$m	\$m	\$m	\$m	\$m	\$m	\$m	\$m	\$m	\$m
Total goods debits	-16 664	-16 415	-16 297	-16 274	-16 350	-16 484	-16 612	-16 723	-16 822	-16 892
General merchandise	-15 811	-15 742	-15 755	-15 792	-15 845	-15 931	-16 038	-16 150	-16 265	-16 368
Consumption goods	-5 001	-5 046	-5 094	-5 112	-5 090	-5 059	-5 041	-5 030	-5 024	-5 026
Food and beverages, mainly for consumption	-744	-750	-756	-758	-752	-742	-730	-719	-711	-704
Household electrical items	-479	-501	-513	-512	-498	-480	-465	-455	-448	-444
Non-industrial transport equipment	-902	-942	-1 006	-1 078	-1 142	-1 198	-1 247	-1 288	-1 320	-1 346
Textiles, clothing and footwear	-701	-687	-673	-653	-629	-607	-591	-579	-572	-569
Toys, books and leisure goods	-448	-446	-442	-432	-418	-403	-391	-379	-368	-359
Consumption goods n.e.s.	-1 728	-1 720	-1 704	-1 679	-1 650	-1 629	-1 616	-1 609	-1 606	-1 604
Capital goods	-3 865	-3 766	-3 703	-3 678	-3 696	-3 740	-3 784	-3 828	-3 873	-3 915
Machinery and industrial equipment	-1 462	-1 395	-1 338	-1 301	-1 284	-1 278	-1 266	-1 245	-1 220	-1 199
ADP equipment	-567	-573	-583	-589	-592	-591	-588	-587	-589	-591
Telecommunications equipment	-547	-536	-522	-512	-508	-506	-504	-501	-498	-496
Civil aircraft(c)	na	na	na	na	na	na	na	na	na	na
Industrial transport equipment n.e.s.	-363	-350	-362	-395	-437	-475	-503	-521	-532	-537
Capital goods n.e.s.(c)	np	np	np	np	np	np	np	np	np	np
Intermediate and other merchandise goods	-6 945	-6 929	-6 958	-7 002	-7 059	-7 132	-7 212	-7 293	-7 368	-7 427
Food and beverages, mainly for industry	-95	-94	-92	-90	-88	-85	-83	-80	-77	-74
Primary industrial supplies n.e.s.	-111	-104	-102	-102	-103	-103	-103	-104	-104	-107
Fuels and lubricants	-1 793	-1 889	-1 970	-2 040	-2 094	-2 130	-2 155	-2 178	-2 196	-2 201
Parts for transport equipment	-616	-609	-615	-628	-645	-662	-676	-685	-693	-700
Parts for ADP equipment	-85	-83	-81	-78	-76	-75	-75	-77	-80	-83
Other parts for capital goods	-1 203	-1 190	-1 178	-1 163	-1 151	-1 149	-1 156	-1 167	-1 181	-1 195
Organic and inorganic chemicals	-379	-370	-366	-363	-361	-359	-361	-363	-364	-367
Paper and paperboard	-177	-172	-171	-172	-176	-180	-185	-189	-193	-195
Textile yarn and fabrics	-104	-102	-101	-101	-101	-100	-99	-97	-95	-94
Iron and steel	-330	-299	-280	-266	-254	-245	-237	-232	-229	-228
Plastics	-223	-219	-217	-216	-215	-216	-216	-215	-214	-213
Processed industrial supplies n.e.s.	-1 618	-1 593	-1 587	-1 583	-1 585	-1 596	-1 610	-1 627	-1 645	-1 660
Other merchandise goods(c)	-112	-106	-99	-90	-85	-89	-99	-111	-122	-134
Goods procured in ports by carriers	-98	-97	-101	-111	-126	-143	-158	-168	-175	-177
Non-monetary gold	-854	-673	-542	-482	-505	-552	-574	-573	-557	-524

na not available

np not available for publication but included in totals where applicable, unless otherwise indicated

(a) For sign conventions, see paragraph 15 of the Explanatory Notes.

(b) Caution should be used when interpreting recent trend estimates as they may be affected by unusual economic factors. For more details on trend estimates, please see paragraph 19 of the explanatory notes.

(c) From December 2008, the Civil aircraft series and commodities subject to a 'no commodity details' or 'no value details' restriction are included in Capital goods n.e.s.. From September to November 2008 commodities with these restrictions are included in Civil aircraft and for earlier periods are included in Other merchandise goods. Trend estimates for the Capital goods n.e.s. series from December 2008 have been suppressed due to the change in the composition of the series.

							7 MONTHS ENDED JANUARY		Change
	2006-07	2007-08	2008-09	Nov 2009	Dec 2009	Jan 2010	2009	2010	
	\$m	\$m	\$m	\$m	\$m	\$m	\$m	\$m	
Services credits	45 956	50 645	53 206	4 499	4 423	4 382	31 213	31 217	—
Manufacturing services on physical inputs owned by others	121	77	258	28	27	27	112	186	66.1
Maintenance and repair services n.i.e.	90	103	86	4	5	5	59	40	-32.2
Transport	8 546	9 129	7 886	561	606	599	5 038	4 021	-20.2
Passenger(c)	4 237	4 118	3 653	238	280	296	2 337	1 699	-27.3
Freight	765	1 463	851	39	41	36	597	319	-46.6
Other	2 348	2 595	2 428	218	218	199	1 495	1 454	-2.7
Postal and courier services(d)	1 196	953	954	66	67	68	609	549	-9.9
Travel	25 161	28 252	31 027	2 734	2 607	2 603	17 605	19 185	9.0
Other services	12 038	13 084	13 949	1 172	1 178	1 148	8 399	7 785	-7.3
Services debits	-45 139	-53 330	-56 179	-4 407	-4 899	-4 918	-35 033	-32 686	6.7
Manufacturing services on physical inputs owned by others	-3	-7	-4	—	-2	-1	-4	-5	-25.0
Maintenance and repair services n.i.e.	-131	-97	-197	-21	-9	-9	-101	-110	-8.9
Transport	-15 732	-16 797	-16 180	-1 110	-1 208	-995	-10 702	-7 795	27.2
Passenger(c)	-6 876	-7 278	-6 094	-381	-439	-348	-3 948	-2 826	28.4
Freight	-8 303	-8 923	-9 385	-682	-723	-602	-6 331	-4 608	27.2
Other	-385	-417	-527	-38	-38	-37	-311	-260	16.4
Postal and courier services(d)	-168	-179	-174	-9	-8	-8	-112	-101	9.8
Travel	-15 934	-20 153	-21 886	-1 872	-2 273	-2 487	-13 717	-15 175	-10.6
Other services	-13 339	-16 276	-17 912	-1 404	-1 407	-1 426	-10 509	-9 601	8.6
Memorandum items:									
Tourism related service credits(e)	29 398	32 370	34 680	2 972	2 887	2 899	19 942	20 884	4.7
Tourism related service debits(e)	-22 810	-27 431	-27 980	-2 253	-2 712	-2 835	-17 665	-18 001	-1.9

— nil or rounded to zero (including null cells)

(a) For sign conventions, see paragraph 15 of the Explanatory Notes.

(b) For more detailed trade in services components, see table 11.

(c) Passenger services includes agency fees and commissions for air transport.

(d) Postal and courier services includes indirect commissions for sea transport.

(e) For a more detailed explanation of tourism related services, see paragraph 27 of the Explanatory Notes.

	Apr 2009	May 2009	Jun 2009	Jul 2009	Aug 2009	Sep 2009	Oct 2009	Nov 2009	Dec 2009	Jan 2010
	\$m	\$m	\$m	\$m	\$m	\$m	\$m	\$m	\$m	\$m
SEASONALLY ADJUSTED										
Services credits	4 395	4 408	4 393	4 376	4 402	4 512	4 464	4 456	4 470	4 483
Manufacturing services on physical inputs owned by others(b)	31	28	27	28	24	20	32	28	27	27
Maintenance and repair services n.i.e.(b)	4	5	3	5	9	7	5	4	5	5
Transport	581	557	561	556	554	559	563	562	565	566
Passenger(c)	270	247	251	229	228	238	237	239	239	241
Freight(d)	52	52	51	53	52	50	40	40	39	38
Other(d)	188	189	189	195	196	194	213	211	214	212
Postal and courier services(e)	71	70	70	78	77	77	74	72	73	74
Travel	2 707	2 732	2 713	2 710	2 734	2 839	2 752	2 745	2 746	2 715
Other services	1 072	1 085	1 090	1 076	1 081	1 087	1 111	1 117	1 127	1 170
Services debits	-4 487	-4 343	-4 422	-4 343	-4 392	-4 402	-4 558	-4 552	-4 596	-4 616
Manufacturing services on physical inputs owned by others(b)	—	—	—	—	-1	—	-1	—	-2	-1
Maintenance and repair services n.i.e.(b)	-27	-14	-19	-17	-18	-21	-15	-21	-9	-9
Transport	-1 193	-1 047	-1 088	-1 073	-1 047	-1 070	-1 108	-1 082	-1 100	-1 067
Passenger(c)	-477	-372	-416	-399	-393	-397	-402	-408	-406	-385
Freight	-658	-616	-614	-622	-603	-624	-655	-624	-646	-634
Other(b)	-43	-43	-41	-37	-37	-35	-38	-38	-38	-37
Postal and courier services(e)	-15	-15	-16	-14	-14	-14	-13	-12	-10	-11
Travel	-1 814	-1 825	-1 834	-1 913	-1 976	-1 959	-2 060	-2 066	-2 104	-2 106
Other services	-1 454	-1 457	-1 481	-1 339	-1 350	-1 352	-1 374	-1 383	-1 382	-1 433
Memorandum items:										
Tourism related service credits(f)	2 977	2 980	2 964	2 939	2 962	3 077	2 989	2 984	2 985	2 956
Tourism related service debits(f)	-2 291	-2 197	-2 250	-2 313	-2 369	-2 356	-2 461	-2 474	-2 509	-2 491

TREND ESTIMATES

Services credits	4 417	4 400	4 397	4 408	4 425	4 445	4 460	4 471	4 479	4 485
Manufacturing services on physical inputs owned by others	29	29	27	26	26	26	26	27	28	28
Maintenance and repair services n.i.e.	5	5	5	6	6	6	6	5	5	5
Transport	586	569	559	555	555	558	561	563	564	566
Passenger(c)	272	256	244	236	234	234	236	237	239	241
Freight	52	52	52	52	50	47	44	41	39	37
Other	189	189	190	193	197	201	206	210	213	215
Postal and courier services(e)	73	72	73	74	75	76	75	74	74	73
Travel	2 689	2 707	2 725	2 743	2 756	2 761	2 762	2 757	2 749	2 739
Other services	1 107	1 090	1 081	1 078	1 083	1 093	1 106	1 120	1 134	1 148
Services debits	-4 429	-4 390	-4 374	-4 379	-4 405	-4 449	-4 498	-4 545	-4 585	-4 622
Manufacturing services on physical inputs owned by others	—	—	—	—	—	-1	-1	-1	-1	-1
Maintenance and repair services n.i.e.	-20	-20	-19	-19	-18	-18	-17	-15	-13	-12
Transport	-1 143	-1 103	-1 078	-1 067	-1 066	-1 073	-1 081	-1 085	-1 087	-1 088
Passenger(c)	-438	-421	-407	-398	-396	-398	-400	-400	-399	-398
Freight	-648	-626	-617	-615	-618	-625	-631	-636	-639	-641
Other	-43	-41	-40	-38	-37	-37	-37	-37	-37	-38
Postal and courier services(e)	-14	-15	-15	-15	-14	-13	-13	-12	-11	-11
Travel	-1 795	-1 820	-1 857	-1 902	-1 950	-1 993	-2 032	-2 066	-2 094	-2 113
Other services	-1 471	-1 447	-1 419	-1 391	-1 371	-1 364	-1 367	-1 378	-1 390	-1 408
Memorandum items:										
Tourism related service credits(f)	2 962	2 963	2 969	2 979	2 989	2 995	2 997	2 994	2 987	2 980
Tourism related service debits(f)	-2 233	-2 240	-2 264	-2 301	-2 346	-2 391	-2 432	-2 466	-2 493	-2 512

— nil or rounded to zero (including null cells)

(a) For sign conventions, see paragraph 15 of the Explanatory Notes.

(b) This component is not seasonally adjusted.

(c) Passenger services includes agency fees and commissions for air transport.

(d) In using these seasonally adjusted series, care should be exercised because of the difficulties associated with reliably estimating the seasonal pattern.

(e) Postal and courier services includes indirect commissions for sea transport.

(f) For a more detailed explanation of tourism related services, see paragraph 27 of the Explanatory Notes.

	CREDITS				DEBITS			
	Mar Qtr	Jun Qtr	Sep Qtr	Dec Qtr	Mar Qtr	Jun Qtr	Sep Qtr	Dec Qtr
	2009	2009	2009	2009	2009	2009	2009	2009
	\$m	\$m	\$m	\$m	\$m	\$m	\$m	\$m
Services	13 584	12 828	13 239	13 596	-13 042	-12 950	-13 603	-14 165
Manufacturing services on physical inputs owned by others	84	86	72	87	—	—	-1	-3
Maintenance and repair services n.i.e.	22	12	21	14	-59	-60	-56	-45
Transport	1 982	1 575	1 699	1 723	-3 571	-3 175	-3 275	-3 525
Passenger(b)	1 058	659	652	751	-1 322	-1 274	-1 254	-1 224
Freight	154	151	164	119	-2 087	-1 731	-1 845	-2 161
Other	552	565	601	654	-134	-127	-109	-114
Postal and courier services(c)	218	200	282	199	-28	-43	-67	-26
Travel	8 126	7 850	8 332	8 250	-5 019	-5 245	-6 311	-6 377
Business	708	644	693	675	-728	-673	-712	-712
Personal	7 418	7 206	7 639	7 575	-4 291	-4 572	-5 599	-5 665
Education-related	4 210	4 457	4 870	4 172	-177	-168	-263	-211
Other(d)	3 208	2 749	2 769	3 403	-4 114	-4 404	-5 336	-5 454
Construction	21	12	13	14	—	—	—	—
Insurance and pension services	78	58	76	77	-145	-137	-135	-129
Financial services	343	279	290	320	-174	-190	-154	-165
Charges for the use of intellectual property n.i.e.	200	219	201	211	-897	-906	-871	-881
Telecommunications, computer and information services	507	513	459	503	-584	-560	-516	-574
Telecommunication services	76	63	62	65	-180	-139	-122	-126
Computer and information services	431	450	397	438	-404	-421	-394	-448
Computer services	356	362	313	347	-336	-358	-332	-371
Information services	9	12	8	12	-11	-10	-5	-12
Other services	66	76	76	79	-57	-53	-57	-65
Other business services	1 801	1 811	1 632	1 899	-2 028	-2 146	-1 789	-1 998
Research and development services	131	146	131	138	-60	-60	-51	-57
Professional and management consulting services	868	879	763	906	-896	-979	-691	-831
Legal, accounting, management consulting, public relations and other professional services	773	788	676	794	-844	-932	-671	-804
Advertising, market research and public opinion polling	95	91	87	112	-52	-47	-20	-27
Technical, trade-related and other business services	802	786	738	855	-1 072	-1 107	-1 047	-1 110
Architectural, engineering and other technical services	386	337	384	441	-414	-430	-386	-386
Waste treatment and de-pollution, agricultural and mining services	65	59	53	52	-152	-186	-130	-152
Operational leasing services	74	63	72	67	-229	-189	-197	-219
Trade-related commission services	178	220	123	171	-44	-57	-52	-56
Other business services n.i.e.	99	107	106	124	-233	-245	-282	-297
Personal, cultural and recreational services	204	196	234	288	-362	-291	-273	-246
Audiovisual and related services	53	24	30	41	-290	-269	-245	-214
Other personal, cultural and recreational services	151	172	204	247	-72	-22	-28	-32
Government goods and services n.i.e.	216	217	210	210	-203	-240	-222	-222
Memorandum items:								
Gross insurance premiums receivable / payable	201	165	168	173	-262	-245	-249	-264
Gross insurance claims payable / receivable	-133	-123	-114	-118	287	275	278	288
Tourism related services(e)	9 184	8 509	8 984	9 001	-6 341	-6 519	-7 565	-7 601

— nil or rounded to zero (including null cells)

(a) For sign conventions, see paragraph 15 of the Explanatory Notes.

(b) Passenger services includes agency fees and commissions for air transport.

(c) Postal and courier services includes indirect commissions for sea transport.

(d) Other personal travel includes health-related travel.

(e) For a more detailed explanation of tourism related services, see paragraph 27 of the Explanatory Notes.

	Nov	Dec	Jan	Per cent	7 MONTHS	
	2009	2009	2010	of total	ENDED JANUARY	
	\$m	\$m	\$m	merchandise	2009	2010
				exports(b)		
				%	\$m	\$m
MAJOR COMMODITIES (c)						
011 Meat of bovine animals	320	342	196	1.4	3 052	2 269
041 Wheat and meslin	199	276	350	2.4	2 344	2 033
268 Wool and other animal hair	201	173	123	0.9	1 176	1 016
281 Iron ore and concentrates	2 226	2 384	2 285	15.8	21 292	16 308
283 Copper ores and concentrates	409	368	260	1.8	2 096	2 308
285 Aluminium ores and concentrates	372	455	448	3.1	4 083	2 782
321 Coal, not agglomerated	2 526	2 952	2 712	18.8	36 861	19 764
333 Crude petroleum oils	518	759	541	3.8	5 581	4 632
334 Refine petroleum oils	209	196	175	1.2	1 805	1 383
343 Natural gas	633	627	789	5.5	7 073	4 355
682 Copper	128	245	144	1.0	1 818	1 470
684 Aluminium	299	397	358	2.5	3 529	2 306
781 Motor vehicles for transport of people	164	179	58	0.4	2 107	977
971 Gold, non-monetary	1 092	1 011	1 221	8.5	9 390	7 384

SECTION AND DIVISION OF THE SITC

0	Food and live animals					
00	Live animals (excl. fish, crustaceans, molluscs and aquatic invertebrates)	111	112	88	0.6	703
01	Meat and meat preparations	526	550	332	2.3	4 419
02	Dairy products and birds' eggs	163	178	151	1.0	1 593
03	Fish (not marine mammals), crustaceans, molluscs and aquatic invertebrates, and preparations thereof	65	116	107	0.7	719
04	Cereals and cereal preparations	297	383	492	3.4	3 381
05	Vegetables and fruit	107	131	129	0.9	835
06	Sugars, sugar preparations and honey	23	16	22	0.1	153
07	Coffee, tea, cocoa, spices, and manufactures thereof	26	27	15	0.1	167
08	Feeding stuff for animals (excl. unmilled cereals)	70	68	58	0.4	777
09	Miscellaneous edible products and preparations	61	63	55	0.4	385
	<i>Total Food and live animals</i>	<i>1 451</i>	<i>1 644</i>	<i>1 447</i>	<i>10.0</i>	<i>13 131</i>
1	Beverages and tobacco					
11	Beverages	165	216	141	1.0	1 583
12	Tobacco and tobacco manufactures	10	13	7	—	81
	<i>Total Beverages and tobacco</i>	<i>175</i>	<i>229</i>	<i>148</i>	<i>1.0</i>	<i>1 665</i>
2	Crude materials, inedible, except fuels					
21	Hides, skins and furskins, raw	50	56	31	0.2	417
22	Oil-seeds and oleaginous fruits	17	93	123	0.9	297
23	Crude rubber (incl. synthetic and reclaimed)	1	1	1	—	8
24	Cork and wood	82	110	75	0.5	787
25	Pulp and waste paper	21	20	20	0.1	167
26	Textile fibres and their wastes (not manufactured into yarn or fabric)	251	233	157	1.1	1 497
27	Crude fertilizers (excl. those of Division 56) and crude minerals (excl. coal, petroleum and precious stones)	22	32	20	0.1	222
28	Metalliferous ores and metal scrap	3 601	3 978	3 597	24.9	32 288
29	Crude animal and vegetable materials, n.e.s.	19	17	12	0.1	149
	<i>Total Crude materials, inedible, except fuels</i>	<i>4 064</i>	<i>4 539</i>	<i>4 036</i>	<i>28.0</i>	<i>35 832</i>
3	Mineral fuels, lubricants and related materials					
32	Coal, coke and briquettes	2 526	2 965	2 714	18.8	37 022
33	Petroleum, petroleum products and related materials	728	957	717	5.0	7 397
34	Gas, natural and manufactured	705	746	867	6.0	7 768
	<i>Total Mineral fuels, lubricants and related materials</i>	<i>3 959</i>	<i>4 668</i>	<i>4 299</i>	<i>29.8</i>	<i>52 187</i>

— nil or rounded to zero (including null cells)

(a) Some SITC sections and divisions exclude commodities subject to a confidentiality restriction. These are included in Division 98. For more information see paragraph 26 of the Explanatory Notes.

(b) Per cent of total merchandise is calculated for the most recent month.

(c) The 'Major commodities' section lists commodities at the SITC Rev 4 3-digit level which are the most significant (by value) or are of particular interest. Abbreviated descriptors have been used. The list of 'Major commodities' is reviewed annually.

	Nov 2009	Dec 2009	Jan 2010	Per cent of total merchandise exports(b)	7 MONTHS ENDED JANUARY	
					2009	2010
					\$m	\$m
SECTION AND DIVISION OF THE SITC						
4	Animal and vegetable oils, fats and waxes					
41	15	19	13	0.1	193	140
42	9	14	13	0.1	109	88
43	Fats and oils (processed), waxes and inedible mixtures or preparations, of animal or vegetable origin, n.e.s.					
	1	2	1	—	7	8
	<i>Total Animal and vegetable oils, fats and waxes</i>					
	25	34	27	0.2	309	236
5	Chemicals and related products, n.e.s.					
51	12	12	10	0.1	102	91
52	33	45	40	0.3	325	293
53	58	56	40	0.3	327	387
54	353	343	287	2.0	2 354	2 403
55	Essential oils and resinoids and perfume materials, toilet, polishing and cleansing preparations					
	56	51	39	0.3	359	351
56	15	15	17	0.1	588	252
57	20	23	17	0.1	188	149
58	29	25	13	0.1	222	205
59	80	78	76	0.5	655	567
	<i>Total Chemicals and related products, nes</i>					
	657	648	539	3.7	5 120	4 697
6	Manufactured goods classified chiefly by material					
61	19	26	13	0.1	163	140
62	16	16	10	0.1	162	106
63	8	11	10	0.1	93	85
64	52	50	50	0.3	394	374
65	24	24	13	0.1	214	164
66	73	39	47	0.3	498	430
67	73	78	74	0.5	991	511
68	660	862	732	5.1	7 122	5 410
69	84	94	53	0.4	655	621
	<i>Total Manufactured goods classified chiefly by material</i>					
	1 010	1 201	1 003	7.0	10 293	7 840
7	Machinery and transport equipment					
71	76	68	48	0.3	556	448
72	141	175	102	0.7	1 144	1 068
73	9	14	8	0.1	116	79
74	General industrial machinery and equipment, n.e.s. and machine parts, n.e.s.					
	125	155	103	0.7	1 117	985
75	87	81	77	0.5	740	567
76	Telecommunications and sound recording and reproducing apparatus and equipment					
	82	79	56	0.4	666	558
77	Electrical machinery, apparatus and appliances, parts (incl. non electrical counterparts of electrical domestic equip)					
	119	124	84	0.6	1 058	865
78	251	279	126	0.9	2 738	1 531
79	110	95	64	0.4	934	796
	<i>Total Machinery and transport equipment</i>					
	999	1 071	667	4.6	9 070	6 898

— nil or rounded to zero (including null cells)

(b) Per cent of total merchandise is calculated for the most recent month.

(a) Some SITC sections and divisions exclude commodities subject to a confidentiality restriction. These are included in Division 98. For more information see paragraph 26 of the Explanatory Notes.

	Nov 2009	Dec 2009	Jan 2010	Per cent of total merchandise exports(b)	7 MONTHS ENDED JANUARY	
					2009	2010
					\$m	\$m
SECTION AND DIVISION OF THE SITC						
8	Miscellaneous manufactured articles					
81	Prefabricated buildings and sanitary, plumbing, heating and lighting fixtures and fittings, n.e.s.					
	18	17	18	0.1	84	98
82	Furniture and parts thereof; bedding, mattresses, mattress supports, cushions and similar stuffed furnishings					
	9	9	5	—	77	58
83	Travel goods, handbags and similar containers					
	4	4	2	—	18	20
84	Articles of apparel and clothing accessories					
	20	18	16	0.1	143	138
85	Footwear					
	3	4	2	—	31	25
87	Professional, scientific and controlling instruments and apparatus, n.e.s.					
	164	187	127	0.9	1 297	1 150
88	Photographic apparatus, equipment and supplies and optical goods, n.e.s., watches and clocks					
	25	24	16	0.1	217	172
89	Miscellaneous manufactured articles, n.e.s.					
	213	177	118	0.8	1 382	1 231
	<i>Total Miscellaneous manufactured articles</i>					
	455	439	304	2.1	3 248	2 893
9	Commodities and transactions not classified elsewhere in the SITC					
93	Special transactions and commodities not classified according to kind					
	166	166	144	1.0	922	1 109
95	Gold coin whether or not legal tender, and other coin being legal tender					
	33	63	25	0.2	356	265
96	Coin (excl. gold coin) not being legal tender					
	—	—	—	—	—	—
97	Gold, non-monetary (excl. gold ores and concentrates)					
	1 092	1 011	1 221	8.5	9 390	7 384
98	Combined confidential items excl. some of SITC 280 (exports only) and some of SITCs 510 and 520 (imports only)					
	476	657	563	3.9	3 455	3 978
	<i>Total Commodities and transactions not classified elsewhere in the SITC</i>					
	1 767	1 896	1 953	13.5	14 124	12 736
Total merchandise exports						
	14 563	16 368	14 422	100.0	144 978	107 452
Balance of Payments Adjustments						
	-36	-23	28	..	535	112
Goods Credits (exports) on a Balance of Payments Basis						
	14 527	16 345	14 450	..	145 513	107 564

.. not applicable
 — nil or rounded to zero (including null cells)

(a) Some SITC sections and divisions exclude commodities subject to a confidentiality restriction. These are included in Division 98. For more information see paragraph 26 of the Explanatory Notes.

(b) Per cent of total merchandise is calculated for the most recent month.

	Nov	Dec	Jan	Per cent	7 MONTHS	
	2009	2009	2010	of total	ENDED JANUARY	
	\$m	\$m	\$m	merchandise	2009	2010
				imports(b)		
				%	\$m	\$m
MAJOR COMMODITIES						
333 Crude petroleum oils	1 136	1 506	1 181	7.7	9 897	8 189
334 Refined petroleum oils	859	984	702	4.6	8 284	6 258
542 Medicaments	597	543	557	3.6	4 053	4 284
641 Paper and paperboard	155	147	161	1.0	1 313	1 105
723 Civil engineering and contractors' plant and equipment	406	193	157	1.0	2 390	1 471
751 Office machines	143	149	153	1.0	1 211	1 142
752 Automatic data processing machines	435	537	459	3.0	3 520	3 298
761 Televisions	360	253	178	1.2	1 823	2 030
764 Telecommunications equipment	703	594	421	2.7	4 310	4 131
781 Motor vehicles for the transport of people	1 263	1 286	1 038	6.7	7 670	8 007
782 Motor vehicles for the transport of goods	521	521	403	2.6	3 652	3 101
784 Parts and accessories of motor vehicles	199	181	205	1.3	1 590	1 360
971 Gold, non-monetary	507	729	414	2.7	6 720	4 077

SECTION AND DIVISION OF THE SITC

0	Food and live animals					
00	Live animals other than fish, crustaceans, molluscs and aquatic invertebrates	6	9	8	0.1	57
01	Meat and meat preparations	37	45	43	0.3	317
02	Dairy products and birds' eggs	47	56	49	0.3	373
03	Fish (not marine mammals), crustaceans, molluscs and aquatic invertebrates, and preparations thereof	111	123	102	0.7	803
04	Cereals and cereal preparations	75	68	51	0.3	501
05	Vegetables and fruit	138	152	120	0.8	1 036
06	Sugars, sugar preparations and honey	22	26	18	0.1	160
07	Coffee, tea, cocoa, spices, and manufactures thereof	98	99	78	0.5	727
08	Feeding stuff for animals (excl. unmilled cereals)	40	67	41	0.3	379
09	Miscellaneous edible products and preparations	138	136	136	0.9	913
	<i>Total Food and live animals</i>	<i>712</i>	<i>781</i>	<i>645</i>	<i>4.2</i>	<i>5 266</i>
1	Beverages and tobacco					
11	Beverages	149	156	106	0.7	990
12	Tobacco and tobacco manufactures	23	20	15	0.1	113
	<i>Total Beverages and tobacco</i>	<i>173</i>	<i>176</i>	<i>121</i>	<i>0.8</i>	<i>1 103</i>
2	Crude materials, inedible, except fuels					
21	Hides, skins and furskins, raw	—	—	—	—	1
22	Oil-seeds and oleaginous fruits	3	7	5	—	38
23	Crude rubber (incl. synthetic and reclaimed)	12	11	9	0.1	132
24	Cork and wood	54	52	48	0.3	372
25	Pulp and waste paper	10	22	16	0.1	192
26	Textile fibres and their wastes (not manufactured into yarn or fabric)	14	10	9	0.1	82
27	Crude fertilizers (excl. those of Division 56) and crude minerals (excl. coal, petroleum and precious stones)	11	21	9	0.1	398
28	Metalliferous ores and metal scrap	43	95	38	0.2	486
29	Crude animal and vegetable materials, n.e.s.	27	32	27	0.2	216
	<i>Total Crude materials, inedible, except fuels</i>	<i>173</i>	<i>250</i>	<i>162</i>	<i>1.1</i>	<i>1 917</i>
3	Mineral fuels, lubricants and related materials					
32	Coal, coke and briquettes	1	1	1	—	22
33	Petroleum, petroleum products and related materials	2 024	2 538	1 915	12.4	18 663
34	Gas, natural and manufactured	141	155	95	0.6	1 576
	<i>Total Mineral fuels, lubricants and related materials</i>	<i>2 166</i>	<i>2 694</i>	<i>2 011</i>	<i>13.1</i>	<i>20 260</i>

— nil or rounded to zero (including null cells)

(a) Some SITC sections and divisions exclude commodities subject to a confidentiality restriction. These are included in Division 98. For more information see paragraph 26 of the Explanatory Notes.

(b) Per cent of total merchandise is calculated for the most recent month.

(c) The 'Major commodities' section lists commodities at the SITC Rev 4 3-digit level which are the most significant (by value) or are of particular interest. Abbreviated descriptors have been used. The list of 'Major commodities' is reviewed annually.

	Nov 2009	Dec 2009	Jan 2010	Per cent of total merchandise imports(b)	7 MONTHS ENDED JANUARY	
					2009	2010
					\$m	\$m
SECTION AND DIVISION OF THE SITC						
4	Animal and vegetable oils, fats and waxes					
41	1	3	1	—	25	14
42	35	46	30	0.2	331	271
43	Fats and oils (processed), waxes and inedible mixtures or preparations, of animal or vegetable n.e.s.					
	7	4	5	—	42	43
	<i>Total Animal and vegetable oils, fats and waxes</i>					
	44	53	36	0.2	399	329
5	Chemicals and related products, n.e.s.					
51	267	292	285	1.9	2 115	1 852
52	77	88	93	0.6	1 339	657
53	53	53	43	0.3	451	360
54	734	672	681	4.4	5 011	5 254
55	Essential oils and resinoids and perfume materials; toilet, polishing and cleansing preparations					
	147	150	127	0.8	1 074	1 087
56	20	39	50	0.3	1 127	315
57	108	108	106	0.7	1 073	761
58	122	115	104	0.7	900	815
59	168	177	144	0.9	1 357	1 113
	<i>Total Chemicals and related products, n.e.s.</i>					
	1 696	1 695	1 633	10.6	14 448	12 215
6	Manufactured goods classified chiefly by material					
61	11	13	9	0.1	109	79
62	218	217	232	1.5	1 643	1 591
63	54	54	59	0.4	435	359
64	227	219	218	1.4	1 835	1 601
65	212	173	185	1.2	1 615	1 429
66	234	221	183	1.2	1 729	1 528
67	244	246	244	1.6	3 942	1 776
68	244	154	390	2.5	1 306	1 404
69	425	386	373	2.4	3 642	3 013
	<i>Total Manufactured goods classified chiefly by material</i>					
	1 871	1 684	1 892	12.3	16 256	12 780
7	Machinery and transport equipment					
71	370	441	336	2.2	3 278	2 640
72	759	587	469	3.0	5 249	3 972
73	48	49	44	0.3	475	344
74	General industrial machinery and equipment, n.e.s. and machine parts, n.e.s.					
	974	1 111	939	6.1	7 159	7 138
75	648	772	699	4.5	5 456	5 003
76	Telecommunications and sound recording and reproducing apparatus and equipment					
	1 225	950	669	4.3	6 996	6 948
77	Electrical machinery, apparatus, appliances, parts (incl. non-elec. counterparts of electrical domestic equip)					
	785	837	712	4.6	6 185	5 498
78	2 165	2 143	1 776	11.5	14 442	13 521
79	675	114	149	1.0	2 670	1 426
	<i>Total Machinery and transport equipment</i>					
	7 649	7 005	5 792	37.6	51 911	46 490

— nil or rounded to zero (including null cells)

(b) Per cent of total merchandise is calculated for the most recent month.

(a) Some SITC sections and divisions exclude commodities subject to a confidentiality restriction. These are included in Division 98. For more information see paragraph 26 of the Explanatory Notes.

	Nov 2009	Dec 2009	Jan 2010	Per cent of total merchandise imports(b)	7 MONTHS ENDED JANUARY	
					2009	2010
					\$m	\$m
SECTION AND DIVISION OF THE SITC						
8	Miscellaneous manufactured articles					
81	Prefabricated buildings; sanitary, plumbing, heating and lighting fixtures and fittings, n.e.s.	65	62	56	0.4	521 468
82	Furniture, parts thereof; bedding, mattresses, mattress supports, cushions and similar stuffed furnishings	235	236	195	1.3	1 852 1 605
83	Travel goods, handbags and similar containers	78	65	56	0.4	543 484
84	Articles of apparel and clothing accessories	362	261	507	3.3	3 348 2 852
85	Footwear	98	84	136	0.9	896 787
87	Professional, scientific and controlling instruments and apparatus, n.e.s.	395	384	322	2.1	2 954 2 659
88	Photographic apparatus, equipment and supplies and optical goods, n.e.s., watches and clocks	133	129	97	0.6	924 858
89	Miscellaneous manufactured articles, n.e.s.	958	743	769	5.0	7 096 6 243
	<i>Total Miscellaneous manufactured articles</i>	<i>2 323</i>	<i>1 964</i>	<i>2 137</i>	<i>13.9</i>	<i>18 134 15 956</i>
9	Commodities and transactions not classified elsewhere in the SITC					
93	Special transactions and commodities not classified according to kind	4	3	3	—	30 22
95	Gold coin whether or not legal tender, and other coin being legal tender	2	1	—	—	4 5
96	Coin (excl. gold coin), not being legal tender	—	—	—	—	— 1
97	Gold, non-monetary (excl. gold ores and concentrates)	507	729	414	2.7	6 720 4 077
98	Combined confidential items excl. some of SITC 280 (exports only) and some of SITCs 510 and 520 (imports only)	236	596	541	3.5	2 559 3 296
	<i>Total Commodities and transactions not classified elsewhere in the SITC</i>	<i>749</i>	<i>1 330</i>	<i>958</i>	<i>6.2</i>	<i>9 312 7 400</i>
	Total merchandise imports	17 555	17 631	15 387	100.0	139 007 118 319
	Balance of Payments Adjustments	-205	366	301	..	1 779 1 682
	Goods Debits (imports) on a Balance of Payments Basis	17 350	17 997	15 688	..	140 786 120 001

.. not applicable

— nil or rounded to zero (including null cells)

(a) Some SITC sections and divisions exclude commodities subject to a confidentiality restriction. These are included in Division 98. For more information see paragraph 26 of the Explanatory Notes.

(b) Per cent of total merchandise is calculated for the most recent month.

	EXPORTS				IMPORTS(b)				BALANCE OF MERCHANDISE TRADE	
	2008-09	Jan	7 months	7 months	2008-09	Jan	7 Months	7 Months	2008-09	7 Months
		2010	ended	ended		Ended	Ended	Ended		Ended
	\$m	\$m	\$m	\$m	\$m	\$m	\$m	\$m	\$m	\$m
Belgium	1 301	125	966	563	1 719	113	1 146	946	-418	-383
Brazil	1 483	52	1 160	604	1 041	44	811	351	442	253
Canada	1 557	63	896	734	2 437	122	1 724	1 021	-880	-287
China	39 325	3 074	20 665	23 634	37 044	2 750	23 479	21 904	2 281	1 730
Denmark	176	9	107	80	1 070	79	674	661	-894	-581
Egypt(c)	453	45	215	231	33	2	23	18	420	213
Fiji	374	20	237	177	160	14	93	90	215	87
Finland	595	2	471	156	978	53	653	376	-383	-221
France	1 721	104	1 184	571	4 653	309	2 990	2 357	-2 932	-1 786
Germany	2 197	88	1 464	826	11 106	791	6 994	6 261	-8 909	-5 435
Hong Kong (SAR of China)	3 192	212	1 832	1 488	1 424	82	939	698	1 768	790
India	15 425	1 395	9 236	8 837	2 114	141	1 189	1 097	13 311	7 740
Indonesia	4 295	291	2 573	2 439	5 039	319	3 211	2 727	-744	-287
Iran	661	18	246	77	95	32	83	68	567	9
Iraq	194	1	79	157	31	—	31	—	163	157
Ireland	134	7	85	66	2 399	175	1 432	1 338	-2 265	-1 272
Israel	262	12	174	105	715	48	489	328	-453	-223
Italy	1 556	52	1 100	519	5 338	465	3 350	2 887	-3 783	-2 367
Japan	52 768	2 886	36 592	20 256	17 842	1 254	11 120	10 034	34 926	10 222
Korea, Republic of	19 274	1 204	12 629	8 633	6 523	481	3 790	3 944	12 751	4 688
Kuwait	428	17	269	311	426	—	285	213	2	97
Malaysia	3 730	273	2 447	1 804	8 335	722	5 330	4 701	-4 605	-2 896
Mexico	902	128	449	473	1 324	96	815	691	-422	-218
Netherlands	3 202	131	2 432	993	1 771	104	1 135	838	1 431	155
New Zealand	8 549	525	5 330	4 688	7 050	386	4 431	3 913	1 500	775
Pakistan	478	71	257	335	181	14	101	83	296	252
Papua New Guinea	1 611	103	898	1 148	3 013	227	1 843	1 727	-1 402	-579
Philippines	1 409	58	919	631	605	33	399	264	804	367
Saudi Arabia	2 250	78	1 383	799	935	43	633	270	1 315	529
Singapore	5 522	340	3 290	3 100	13 445	630	8 917	6 213	-7 923	-3 113
South Africa	2 056	118	1 468	941	1 258	81	910	564	798	377
Spain	612	51	467	255	1 731	116	1 145	993	-1 119	-738
Sweden	566	28	420	197	2 441	168	1 509	1 196	-1 875	-999
Switzerland	660	14	341	141	2 481	165	1 483	1 358	-1 821	-1 217
Taiwan	8 126	443	5 267	3 530	4 089	328	2 718	1 983	4 037	1 547
Thailand	4 951	597	3 094	2 730	10 749	851	6 276	7 174	-5 799	-4 443
Turkey	811	26	643	152	507	46	288	263	304	-111
United Arab Emirates	3 604	175	2 665	1 124	1 924	128	1 105	1 366	1 680	-243
United Kingdom	11 509	226	6 361	3 028	9 024	464	6 297	3 347	2 484	-319
United States of America	11 600	621	7 500	5 471	25 334	1 667	15 891	12 454	-13 734	-6 984
Viet Nam	1 234	96	646	809	4 402	244	2 962	1 695	-3 168	-886
Other Countries(b)	10 070	644	6 520	4 636	16 697	1 603	10 309	9 903	-6 626	-5 266
Total	230 829	14 422	144 978	107 452	219 485	15 387	139 007	118 319	11 344	-10 867
APEC	169 417	10 970	106 001	82 099	151 755	10 697	96 064	83 171	17 663	-1 072
ASEAN	21 286	1 662	13 052	11 598	43 640	2 906	27 947	23 398	-22 354	-11 799
Developing Countries	124 497	9 033	74 126	65 051	106 794	7 787	67 796	59 914	17 703	5 137
Least Developed Countries	2 144	180	1 163	1 043	281	16	131	151	1 862	892
European Union(d)	24 043	840	15 360	7 465	45 402	3 023	29 347	22 659	-21 358	-15 194
OECD	120 069	6 323	79 658	47 986	110 059	7 297	69 580	56 914	10 010	-8 928

— nil or rounded to zero (including null cells)

(a) See Time series spreadsheets for details of all countries.

(b) From September 2008 imports data with confidentiality restrictions 'no commodity details' or 'no value details' are included in Other countries.

(c) Exports of Alumina to Egypt are excluded from country total and included in the 'Other Countries' category.

(d) The European Union includes 27 member countries.

	7 MONTHS ENDED JANUARY			
	2008-09	Jan 2010	2009	2010
	\$m	\$m	\$m	\$m
EXPORTS (a)				
New South Wales	38 777	2 175	24 357	17 507
Victoria	20 375	1 115	12 604	10 187
Queensland	56 553	2 992	37 516	23 275
South Australia	9 527	482	5 822	4 496
Western Australia	86 880	6 522	53 215	42 570
Tasmania	3 511	193	2 117	1 568
Northern Territory	6 292	383	3 980	2 811
Australian Capital Territory	11	—	6	4
State not available for publication(b)	797	26	619	296
Re-exports	8 105	534	4 740	4 739
Total	230 829	14 422	144 978	107 452
IMPORTS				
New South Wales	78 994	5 628	49 242	43 997
Victoria	56 457	3 964	36 473	30 719
Queensland	33 972	2 555	22 401	17 975
South Australia	6 867	467	4 432	3 779
Western Australia	33 123	2 006	20 614	16 316
Tasmania	956	49	660	478
Northern Territory	4 347	176	2 736	1 756
Australian Capital Territory	7	—	5	3
State not available for publication(c)	4 761	541	2 444	3 296
Total	219 485	15 387	139 007	118 319

— nil or rounded to zero (including null cells)

(a) State in which the final stage of production or manufacture occurs.

(b) Exports of Alumina to Bahrain, Egypt and Iceland are excluded from the state totals and included in 'State not available for publication'.

(c) From September 2008 imports data with confidentiality restrictions 'no commodity details' or 'no value details' are included in State not available for publication.

PERIOD AVERAGE EXCHANGE RATES(a), Per Australian dollar

<i>Period</i>	<i>United States dollar</i>	<i>UK pound sterling</i>	<i>Euro</i>	<i>Japanese yen</i>	<i>Special Drawing Right</i>	<i>Trade-weighted index of value of the A\$(b)</i>
FINANCIAL YEAR						
2006-07	0.7863	0.4066	0.6018	93.21	0.5251	64.8
2007-08	0.8968	0.4479	0.6099	98.63	0.5664	69.7
2008-09	0.7456	0.4621	0.5414	73.99	0.4869	60.2
MONTHS						
2008						
November	0.6557	0.4279	0.5155	63.55	0.4421	54.4
December	0.6690	0.4480	0.4973	61.02	0.4407	54.6
2009						
January	0.6784	0.4678	0.5095	61.37	0.4478	55.4
February	0.6490	0.4503	0.5074	59.97	0.4386	54.2
March	0.6646	0.4680	0.5093	64.92	0.4483	56.0
April	0.7122	0.4846	0.5398	70.24	0.4773	59.1
May	0.7626	0.4954	0.5596	73.72	0.5022	61.7
June	0.8023	0.4898	0.5721	77.39	0.5194	64.2
July	0.8040	0.4913	0.5709	75.96	0.5180	64.0
August	0.8344	0.5047	0.5852	79.15	0.5349	66.0
September	0.8611	0.5275	0.5915	78.74	0.5461	67.2
October	0.9090	0.5613	0.6130	82.03	0.5716	70.0
November	0.9202	0.5540	0.6166	82.04	0.5754	70.6
December	0.9028	0.5552	0.6174	80.89	0.5693	69.6
2010						
January	0.9148	0.5659	0.6400	83.49	0.5842	70.7

(a) These exchange rates and the trade-weighted index are derived using rates provided by the Reserve Bank of Australia in respect of each trading day.

(b) May 1970 = 100. The Trade-weighted index is reweighted annually on 1 October and on special occasions as required.

	2006-07	2007-08	2008-09	Jul 2009	Aug 2009	Sep 2009	Oct 2009	Nov 2009	Dec 2009
	\$m	\$m	\$m	\$m	\$m	\$m	\$m	\$m	\$m
BALANCE									
On goods and services	—	—	—	—	—	—	—	—	—
CREDITS									
Total goods and services	—	—	—	—	—	—	—	—	—
<i>Total goods</i>	—	—	—	—	—	—	—	—	—
Rural goods	—	—	—	—	—	—	—	—	—
Non-rural goods	—	—	—	—	—	—	—	—	—
Net exports of goods under merchandising	—	—	—	—	—	—	—	—	—
Non-monetary gold	—	—	—	—	—	—	—	—	—
<i>Total services</i>	—	—	—	—	—	—	—	—	—
DEBITS									
Total goods and services	—	—	—	—	—	—	—	—	—
<i>Total goods</i>	—	—	—	—	—	—	—	—	—
Consumption goods	—	—	—	—	—	—	—	—	—
Capital goods	—	—	—	—	—	—	—	—	—
Intermediate and other merchandise goods	—	—	—	—	—	—	—	—	—
Non-monetary gold debits	—	—	—	—	—	—	—	—	—
<i>Total services</i>	—	—	—	—	—	—	—	—	—

— nil or rounded to zero (including null cells)

(a) This table is presented consistent with BPM6 sign conventions. This means for the balance on goods and services a negative revision indicates a decrease in a surplus or an increase in a deficit. For debits a negative revision indicates an increase in debits while a positive revision indicates a decrease in debits.

EXPLANATORY NOTES

INTRODUCTION

1 This publication presents preliminary estimates of Australia's international trade in goods and services on a balance of payments basis (Tables 1–11 and 17) and merchandise import and export statistics on a recorded trade basis (Tables 12–15). In addition, Table 16 Exchange rates and trade-weighted indexes are derived by using exchange rates and indexes provided by the Reserve Bank.

2 Merchandise trade statistics on a recorded trade basis are compiled from information submitted by exporters and importers or their agents to the Australian Customs and Border Protection Service (Customs and Border Protection). Adjustments for coverage, timing and valuation are made to recorded trade data to convert them to a balance of payments basis. The services data are sourced from the quarterly Survey of International Trade in Services and a range of administrative data and indicator series.

3 More comprehensive quarterly estimates of Australia's trade in goods and services, together with comprehensive details of Australia's balance of payments are included in the quarterly publication, *Balance of Payments and International Investment Position, Australia* (cat. no. 5302.0). Detailed monthly statistics on merchandise trade are available in Time Series Spreadsheets on the ABS website or by subscription to tailored services. More information on the *International Trade in Services by country, by state and by detailed services category* are available on a financial year basis (cat. no. 5368.0.55.003) with the September issue of this publication and calendar year basis (cat. no. 5368.0.55.004) with the March issue of this publication.

CONCEPTS, SOURCES AND METHODS

4 The conceptual framework used in compiling Australia's merchandise trade statistics can be found in *International Merchandise Trade, Australia: Concepts, Sources and Methods, 2001* (cat. no. 5489.0).

5 The conceptual framework used in compiling Australia's balance of payments statistics is based on the *International Monetary Fund's Balance of Payments and International Investment Position Manual Sixth Edition* (BPM6). Descriptions of the underlying concepts and structure of the balance of payments and the sources, methods and terms used in compiling the estimates are presented in *Balance of Payments and International Investment Position, Australia: Concepts, Sources and Methods, 1998* (cat. no. 5331.0). The current version of this document reflects the international standards prior to BPM6. A revised Concepts, Sources and Methods publication is scheduled for release in late 2010. The *Information paper: Implementation of revised international statistical standards in the ABS National and International Accounts* (cat. no. 5310.0.55.002) describes the key changes introduced with BPM6.

6 To bring merchandise trade statistics on a recorded trade basis to a balance of payments basis, timing adjustments are made to ensure that the transaction is recorded in the period in which ownership changed, rather than in the period in which the transaction was recorded by Customs and Border Protection or the period in which the goods arrived in/departed from an Australian port. Adjustments are also made to account for the change of ownership of goods not included in merchandise trade statistics. Chapter 6 of cat. no. 5331.0 provides more detail on the relationship between statistics on international merchandise trade on a recorded trade basis and on a balance of payments basis.

7 Recorded trade exports data presented for recent months in tables 12–15 of this publication are based on information initially reported by exporters to Customs and Border Protection. At the time of initial reporting to Customs and Border Protection the final prices may not be known for some commodities. Therefore, the information recorded for recent months for commodities like iron ore and coal can include a variety of prices including previous or current contract prices and the prevailing spot prices. Newly negotiated contract prices may not be fully reflected in the data first reported to

EXPLANATORY NOTES *continued*

CONCEPTS, SOURCES AND METHODS *continued*

Customs and Border Protection, and to compensate for this, the Balance of Payments series may reflect adjusted price levels.

8 The Concepts, Sources and Methods publications and information papers are available to download for free from the ABS website. Select *Statistics*, then select *By Catalogue Number*, and then the catalogue numbers as above.

CLASSIFICATIONS

9 The merchandise trade data on a recorded trade basis are presented using the following commodity classifications:

- the Harmonised System 2007 (available on request)
- the Standard International Trade Classification (SITC Revision 4)
- the Classification by Broad Economic Categories (BEC)
- the industry classification: Australian and New Zealand Standard Industrial Classification, 2006 (ANZSIC 06).

10 The Balance of Payments Goods and Services series are presented according to three classifications with the goods classifications derived from SITC Revision 4 and BEC. The classifications are:

- for goods:
 - the Balance of Payments Commodities for Exports (BoPCE)
 - the Balance of Payments Broad Economic Categories for Imports (BoPBEC),
- for services:
 - the Extended Balance of Payments Services Classification (EBOPS).

ACCURACY, RELIABILITY AND REVISIONS

11 While every effort is made to ensure the accuracy and reliability of estimates, most series are subject to revision as more complete and accurate information becomes available. Care should be exercised in the use and interpretation of estimates in this publication. The transactions occurring in international trade in goods and services are of many different kinds, and therefore the compilation of trade estimates entails the use of a very wide range of statistical data of varying degrees of accuracy and timeliness. For further information on the monthly services series, see paragraph 25.

12 The revisions are applied differently for merchandise trade and Balance of Payments series. Each month, merchandise trade data are revised for the previous six months to incorporate latest available data.

13 For the Balance of Payments Goods and Services series, in original terms, no revisions are applied in the July, October, January or April issues. This is to ensure the monthly series align with the comparable series in the quarterly publication. In the September issue revisions can be applied to the four previous financial years. In other issues revisions can be applied to the previous and current financial years to incorporate the latest available survey and administrative data.

14 In seasonally adjusted and trend terms, revisions may occur at any time point but tend to focus on the most recent estimates. Please also refer to paragraphs 17 (seasonal adjustment) and 19 (trend estimates) below.

SIGN CONVENTION

15 In keeping with BPM6 conventions, balance of payments basis credit entries are shown with an implied positive sign and debit items are shown as negative entries. For statistics on a recorded trade basis, both imports and exports are shown without sign. The calculation of percentage changes on balance of payments debit items are made without regard to sign. References to balance of payments debit items in Key Figures, Key Points, and Analysis and Comments are also made without regard to sign.

SEASONALLY ADJUSTED AND TREND ESTIMATES

16 The estimates of international trade in goods and services on a balance of payments basis are seasonally adjusted, however the merchandise exports and imports statistics on a recorded trade basis are not. Monthly original estimates are volatile, being subject to calendar-related and large irregular influences. Seasonally adjusted estimates are derived

EXPLANATORY NOTES *continued*

SEASONALLY ADJUSTED AND TREND ESTIMATES *continued*

by estimating and removing from the original series systematic calendar related effects, such as seasonal (e.g. Christmas), trading day and moving holiday (e.g. Easter) influences. Seasonal adjustment does not aim to remove the irregular or non-seasonal influences which may be present in any particular month. These irregular influences may reflect both random economic events and difficulties of statistical recording.

17 The seasonally adjusted statistics in this publication use the concurrent seasonal adjustment technique and Autoregressive Integrated Moving Average (ARIMA) modelling to estimate factors for the current and previous months. Under concurrent seasonal adjustment, the estimates of seasonal factors are fine tuned as new or revised original estimates become available each period. The seasonally adjusted estimates are subject to revisions at each reference month as the estimates of seasonal factors are improved.

18 ARIMA modelling relies on the characteristics of the series being analysed to project future period data. ARIMA modelling is used on a case-by-case basis where it results in reduced revisions to seasonally adjusted series when subsequent data become available. The projected values are temporary, intermediate values, that are only used internally to improve the estimation of the seasonal factors. The projected data do not affect the original estimates and are discarded at the end of the seasonal adjustment process. The ARIMA model is assessed as part of the annual review and, following the 2009 annual review, 40 of the 45 directly seasonally adjusted trade in goods and services time series use an ARIMA model.

19 The month-to-month movements of the seasonally adjusted estimates may not be reliable indicators of underlying behaviour because they include irregular or non-seasonal movements. Trend estimates reduce the effect of these movements as they are derived by applying a 13-term Henderson moving average to the seasonally adjusted series. The 13-term Henderson moving average (like all Henderson averages) is symmetric, but as the end of a time series is approached, asymmetric forms of the average are applied. While the asymmetric weights enable trend estimates for recent months to be produced, it does result in revisions to the estimates for the most recent six months as additional observations become available. Revisions to trend estimates can also occur because of revisions to the original data and as a result of the re-estimation of the seasonal factors. Trend estimates should be used with caution, especially around the time of unusual influences, until these have been appropriately taken into account.

20 Information papers and articles on time series methods are available on the ABS website:

- for seasonal adjustment methods, see *Information Paper: An Introductory Course on Time Series Analysis, Jan 2005* (cat. no. 1346.0.55.001) and *Time Series Analysis Frequently Asked Questions, 2003* (cat. no. 1346.0.55.002)
- for ARIMA modelling, see *Feature article: Use of ARIMA modelling to reduce revisions* in the October 2004 issue of *Australian Economic Indicators* (cat. no. 1350.0)
- for trend estimates methods, see *Information Paper: A Guide to Interpreting Time Series – Monitoring Trends* (cat. no. 1349.0)
- alternatively contact the Assistant Director, Time Series Analysis on (02) 6252 6345 or e-mail <time.series.analysis@abs.gov.au>.

ECONOMIC TERRITORY

21 In accordance with BPM6 definitions, Australia's economic territory, on a balance of payments basis, is the area under the effective control of the Australian government. It includes the land area, airspace, territorial waters, including jurisdiction over fishing rights and rights to fuels and minerals. Australian economic territory also includes territorial enclaves in the rest of the world. These are clearly demarcated areas of land, located in other countries and which are owned or rented by the Australian government

EXPLANATORY NOTES *continued*

ECONOMIC TERRITORY

continued

for diplomatic, military, scientific or other purposes. Specifically, the economic territory of Australia consists of:

- Geographic Australia which includes Cocos (Keeling) Islands and Christmas Island;
- Norfolk Island;
- Australian Antarctic Territory;
- Heard Island and McDonald Islands;
- Territory of Ashmore Reef and Cartier Island;
- Coral Sea Islands;
- Australia's territorial enclaves overseas; and
- the Joint Petroleum Development Area (joint territory between Australia and East Timor (Timor-Leste)).

22 Because of administrative complexities and measurement difficulties, Norfolk Island transactions with the rest of the world will not always be captured in all relevant Balance of Payments statistics. Most of the transactions involving Norfolk Island are not material to Australia's trade performance and not capturing these transactions will not distort these statistics. However, any significant transactions will be identified and included in the relevant statistics.

COMMODITY BREAKDOWN OF GOODS

23 For details of the classifications used to present goods exports (credits) and imports (debits) on a balance of payments basis, see tables 6.6 and 6.7, respectively, in *Balance of Payments and International Investment Position, Australia: Concepts, Sources and Methods*, 1998 (cat. no. 5331.0).

24 The recorded trade statistics shown in tables 12 and 13 are classified by the Standard International Trade Classification (SITC). Imports and exports of goods at a more detailed level are available from the Time Series spreadsheets on the ABS website. All data from July 2005 are presented according to SITC Rev 4 and data prior to July 2005 are presented according to SITC Rev 3. For details refer to the 'Classifications and Standards Update' in the July 2008 issue of this publication.

MONTHLY SERVICES SERIES

25 Monthly indicators for many of the services components that are only surveyed quarterly are not available. Monthly estimates for the freight and other transportation components of services credits in table 9 are derived by dividing the quarterly estimate by three. Freight debits are derived directly from imports data for the reference month as a difference between total merchandise cost, insurance and freight (CIF) and free on board (FOB), adjusted to reflect timing and processing adjustments. For freight credits and other transportation credits and debits, estimates are derived by extrapolating the last quarter's data by an average of movements for the same quarter over the three previous years, and then dividing the estimate by three. Similarly other services estimates are derived by extrapolating the last quarter's data by an average of movements for the same quarter over the previous three years, and then dividing the estimate by three.

CONFIDENTIALITY OF MERCHANDISE TRADE STATISTICS

26 The release of statistics for certain merchandise trade commodities is restricted in order to prevent the identification of the activities of an individual business, where this is requested by the business concerned. These restrictions do not affect the total value of exports and imports, but they can affect statistics at the country, state and commodity levels. Imports data that have the confidentiality restrictions 'No commodity details' or 'No value details' are aggregated into a single confidential commodity code. For data prior to September 2008, these data are added back into the appropriate state total and country total (i.e. these totals show the correct level of trade). From September 2008 these confidential data are not added back. Instead the confidential data are published as 'No country details' in the country totals and 'State not available for publication' in the state totals. Therefore, country and state totals from September 2008 may not represent the actual amount of trade in each country/state but only the trade in commodities without a 'No commodity details' or 'No value details' restriction. For information on the

EXPLANATORY NOTES *continued*

CONFIDENTIALITY OF MERCHANDISE TRADE STATISTICS *continued*

confidentiality restrictions applied to the merchandise trade statistics in this publication, refer to the current issue of *International merchandise trade: Confidential Commodities List (CCL)* (cat. no. 5372.0.55.001).

TOURISM RELATED SERVICES

27 The tourism related services memorandum items provide timely indicators of the movements in tourism related activities, not an absolute measure of the level of these activities. The tourism related indicator has been derived by combining total travel services (business, education-related and other personal travel) and passenger transportation services (which includes agency fees and commissions for air transport).

SERVICES BY STATE AND BY PARTNER COUNTRY

28 Annual services data by state, by country and detailed services are released twice yearly. Calendar year data are usually released with the March issue of this publication and financial year data are usually released with the September issue. Refer to Time series data for details.

29 Services credits are classified by the state of provision, while services debits are classified by the state of consumption. The state allocations for transportation, travel, postal and courier, and telecommunication services are based on a number of indicators including merchandise trade statistics by state, overseas passenger arrivals and departures by state of clearance and data provided by the Department of Immigration and Citizenship. The allocation for other services (about 25% of all trade in services) is primarily based on the location of the business reporting the information, which serves as a proxy for the state of provision/consumption of that service. The data should be used with care but are considered suitable for analysis over time.

30 A comprehensive explanation of the data sources used and the methodology applied in the compilation of partner country statistics is provided in Chapter 17 of *Balance of Payments and International Investment Position, Australia – Concepts, Sources and Methods* (cat. no. 5331.0). Approximately 7% of total services credits and 5% of total services debits for both 2007–08 and 2008–09 were either confidential, or unable to be allocated to individual countries.

ABS DATA AVAILABLE

31 More detailed balance of payments and recorded merchandise trade data, including forward seasonal factors are available as time series spreadsheets or data cubes from the ABS web site. Merchandise trade data by commodity, country and state that are not on the ABS web site may be available on request. Inquiries should be made to the National Information and Referral Service as shown on the back of this publication.

RELATED PRODUCTS AND PUBLICATIONS

32 Users may also wish to refer to the following publications which can be downloaded free of charge from the ABS web site by using the 'Statistics' tab and selecting the relevant catalogue number:

- *Balance of Payments and International Investment Position, Australia* (cat. no. 5302.0) – issued quarterly
- *International Merchandise Imports, Australia* (cat. no. 5439.0) – issued monthly
- *International Trade Price Indexes, Australia* (cat. no. 6457.0) – issued quarterly
- *Balance of Payments and International Investment Position, Australia: Concepts, Sources and Methods* (cat. no. 5331.0)
- *Information Paper: Quality of Australian Balance of Payments Statistics* (cat. no. 5342.0)
- *International Merchandise Trade, Australia: Concepts, Sources and Methods* (cat. no. 5489.0)
- *A Guide to Australian Balance of Payments and International Investment Position Statistics* (cat. no. 5362.0.55.001).

EXPLANATORY NOTES *continued*

RELATED PRODUCTS AND PUBLICATIONS *continued*

33 Current publications and other products released by the ABS are available from the Statistics tab on the ABS web site. The ABS also issues a daily *Release Advice* on the web site which details products to be released in the week ahead. A *foreign trade theme page* and a *balance of payments theme page* are available on the ABS website. Select *Themes – Economy – Foreign Trade* or *Balance of Payments*. This page provides direct links to all foreign trade and balance of payments related data and publications, recent changes and forthcoming events, links to relevant web sites and a range of other information about the Australian International Accounts.

ROUNDING

34 Where figures have been rounded, discrepancies may occur between sums of the component items and totals. Percentage movements are calculated from data at the level of precision presented in this publication (i.e. \$m) except for international merchandise trade tables.

ABBREVIATIONS

\$b	billion (thousand million) dollars
\$m	million dollars
ABS	Australian Bureau of Statistics
APEC	Asia Pacific Economic Co-operation
ASEAN	Association of South-East Asian Nations
n.e.s.	not elsewhere specified
n.i.e.	not included elsewhere
OECD	Organisation for Economic Co-operation and Development
SAR	Special Administrative Region
SITC	Standard International Trade Classification

APPENDIX RELATED ARTICLES

<i>Article</i>	<i>Source(a)</i>	<i>Issue</i>
Investment		
Foreign ownership of equity	5302.0	Sep qtr 2007
Kangaroo bonds	1301.0	2006
Foreign currency exposure	5308.0	Mar qtr 2005
Gross external debt	5302.0	Sep qtr 2003
Balance of payments		
International comparison of balance of payments statistics	(b) 5363.0	1998–99
Merchandise trade		
Export and import invoice currencies, 2009	5368.0	Dec 2009
Characteristics of Australian Exporters	5368.0.55.006	2007–08
100 years of international trade statistics	5368.0	Oct 2007
New methodology for deriving counts of Australian exports	5368.0	Feb 2006
Australia's Importers, 2003–04	5368.0	Nov 2004
Australia's Exporters, 2003–04	5368.0	Oct 2004
Australia's trade with the USA	5368.0	Mar 2004
Foreign ownership of Australian exporters and importers	5496.0.55.001	2002–03
Major commodities traded by Australia, 1991 to 2000	(b) 5422.0	Dec qtr 2000
Trade in services		
International trade in services by partner country, 2006, preliminary	5368.0	Dec 2006
Changes to International trade in services statistics, August 2006	5368.0	Aug 2006
Changes to International trade in services travel statistics	5368.0	Aug 2005
Finance		
Impact of the farm season on Australian production in 2002–03 and 2003–04	1301.0	2005
Recent trends in construction and first home buyers finance	5609.0	Mar 2002
Household sector data in the financial accounts	5232.0	Mar qtr 2002
Technical information		
Implementation of new international statistical standards in ABS National and International Accounts, September 2009	5310.0.55.002	Oct 2009
Estimation of Workers' Remittances based on Balance of Payments and International Investment Position Manual, Sixth Edition	5302.0.55.003	Sep 2009
Impact of revised international standards on monthly International Trade in Goods and Services	5368.0.55.014	Aug 2009
Changes to International Trade in Goods Statistics - Countries and Ports	5368.0.55.013	Jul 2009
Revisions to international standards in quarterly Balance of Payments and International Investment Position statistics from September 2009	5302.0.55.002	2009
Revisions to international standards in monthly international trade in goods and services statistics from August 2009	5368.0.55.012	2009
Changes to International Trade in Goods Industry Statistics, July 2009	5368.0.55.011	Dec 2008
Technical note 1 - Income on debt	5302.0	Jun qtr 2008
Technical note 2 - Use of CDI data	5302.0	Jun qtr 2008
Impact of introducing Revision 4 of the Standard International Trade Classification	5368.0.55.010	2008
Changes to international trade statistics July 2008	5368.0.55.009	2007–08
Introduction of revised international standards in ABS economic statistics in 2009	5310.0.55.001	2007
Changes on 1 January 2007 to Statistical Codes in the AHECC and the Customs Tariff	1233.0.55.001	Nov 2006
ABS implementation in January 2007 of revisions to international trade classifications, 2007	5368.0.55.005	Jun 2006
Revised treatment of Goods for Processing in Merchandise Trade and Balance of Payments Statistics	5368.0	May 2006
Impact of Customs and ABS changes on import statistics from October 2005	5439.0	Oct 2005
ABS management of the impact of the implementation of the imports component of the New Customs System	5439.0	Aug 2005
Changes to country and port classifications	5368.0	May 2003
Implementation of New Customs Systems	5368.0	Aug 2004
The effect of customs changes on export statistics	5422.0	Jun qtr 2002
Data confidentiality	5422.0	Dec qtr 1999

- (a) In the ABS web site home page, select Statistics; By Catalogue Number; and click on the specified catalogue number and issue. Note: in some instances, a particular issue of the publication can be found in the Past & Future Releases page of the catalogue.
- (b) This article can be found in pdf format by referring to the Downloads page of the specified issue of this publication on the ABS web site.

FOR MORE INFORMATION . . .

INTERNET **www.abs.gov.au** the ABS website is the best place for data from our publications and information about the ABS.

INFORMATION AND REFERRAL SERVICE

Our consultants can help you access the full range of information published by the ABS that is available free of charge from our website. Information tailored to your needs can also be requested as a 'user pays' service. Specialists are on hand to help you with analytical or methodological advice.

PHONE 1300 135 070

EMAIL client.services@abs.gov.au

FAX 1300 135 211

POST Client Services, ABS, GPO Box 796, Sydney NSW 2001

FREE ACCESS TO STATISTICS

All statistics on the ABS website can be downloaded free of charge.

WEB ADDRESS www.abs.gov.au